



# WESTTOWN GAZETTE

A Quarterly Newsletter to the Citizens of Westtown Township - Winter Issue #28



## GREETINGS WESTTOWN FRIENDS & NEIGHBORS.

As with every December, the Westtown Board of Supervisors adopted an annual budget for the succeeding year. As required by law, the 2019 budget is balanced and for the sixth year in a row was adopted without an increase in real estate taxes. The township budget has five funds totaling \$15,942,601 which includes an Operating Budget (General, Refuse & Liquid Fuels Funds) of \$9,824,592. The Operating Budget includes public safety, consisting of police services representing 34.6% (\$3,416,773; a 9.7% increase over 2018) with fire and ambulance representing 3.9% (\$378,208) for a public safety total of 38.5% (\$3,794,981).

Westtown was established in 1685. While Westtown's roads, bridges, sewers, traffic signals, and parks facilities are not nearly that old, they have aged and require a significant investment to preserve them for many years in the future. Accordingly, another noteworthy item from the 2019 township budget is the \$2,990,000 Capital Projects Fund which has monies allocated for the public works garage project, the Oakbourne Road Bridge replacement project, public sewer repairs, and several parks and buildings projects including exterior repairs to Oakbourne

Mansion. In addition, as in years past, nearly \$1,000,000 from the General and Liquid Fuels Funds has been allocated for road paving and associated repairs to stormwater management facilities.

The 2019 budget can be accessed on Westtown's website homepage under Departments/Finance. The township's financial position continues to be very strong, enabling Westtown to provide excellent levels of services to all residents, businesses, and institutions.

**Sunoco Pipelines Update.** The installation of the Mariner East 2 and 2X high-pressure 16" and 20" dia. pipelines has still not begun in Westtown. While pipeline work has been completed in much of Chester County, 100 remaining work has been delayed while PADEP completes review of environmental permits. According to published reports, on December 29, 2018, the new 20" pipeline was placed in service transporting natural gas liquids (ethane, butane and propane) to the Marcus Hook industrial complex in Delaware County using temporary connections to pre-existing 12" and 16" pipelines. Please check the township website homepage under Pipelines for project updates.

### **Oakbourne Road Bridge Over Goose Creek.**

As noted above, the Oakbourne Road Bridge Replacement Project is scheduled to be completed in 2019. This is the total replacement of an obsolete bridge that has been closed twice in the last twenty years due to severe damage from the flooding of Goose Creek. The project will include the removal of a sewer force main and a water main from the bridge structure, and a slight realignment of Oakbourne Road on the east side so approaching vehicles can view each other without using the two convex mirrors. The project will require the temporary closing of Oakbourne Road to all traffic. The replacement bridge will consist of a pre-cast box culvert. In addition to being economical, as a pre-cast structure it will significantly shorten the time to complete the project and reopen the road to traffic.

As always, I invite you to stop by the township building for a visit. I welcome the opportunity to meet you, hear your concerns, and answer any questions about Westtown.

Best Regards,

*Rob Pingar*

Rob Pingar, Township Manager

## IN THIS ISSUE:

Contact Information & Bulletin Board.....	2	Winter Weather Information & Employment Opportunity ....	8
Planning & Zoning Projects Update.....	3	Proper Use of Backup Generators During Power Outages .....	9
Updating Township History .....	4/5	Meetings & Events .....	10
Our First Year at the Westtown Community Garden.....	6	Trash and Recycling Information .....	11
CRC Streams Cleanup.....	7	Yard Waste and Holiday Trash Schedule .....	12



# Westtown Township, County of Chester

## Commonwealth of Pennsylvania



**Board of Supervisors:** Scott Yaw, Mike Di Domenico, Carol De Wolf

Street Address: 1039 Wilmington Pike • West Chester, Pennsylvania 19382

Mailing Address: P.O. Box 79 • Westtown, PA 19395-0079

Phone: 610-692-1930 • Fax: 610-692-9651 • [www.westtownpa.org](http://www.westtownpa.org)

### CHESTER COUNTY USEFUL CONTACTS & PHONE NUMBERS

#### Chester County Government Services Center:

601 Westtown Road, West Chester, PA 19382  
 Information: 610-344-6000  
 Aging Services: 610-344-6350  
 Children, Youth, & Families: 610-344-5800  
 Emergency Services: 610-344-5000  
 Health Department: 610-344-6225  
   Septic Systems: 610-344-6526  
   Recycling/Hazardous Waste: 610-273-3771  
 License Bureau (Dog, Fishing, Hunting): 610-344-6370  
 Marriage License Bureau: 610-344-6335  
 Passports: 610-344-6310  
 Recorder of Deeds: 610-344-6330  
 Tax Assessment: 610-344-6105  
 Tax Claim/Lien Bureau: 610-344-6360  
 Voters Services: 610-344-6410

#### Chester County Court House:

313 W. Market Street, West Chester Borough, PA 19380

#### District Justice for Westtown:

William Kraut (District Court 15-2-03): 610-436-5757

#### Chester County Conservation District:

610-925-4920

#### West Chester Area School District:

782 Springdale Drive, Exton, PA 19341  
 Main Number: 484-266-1000 / School Tax: 484-266-1035

#### State Senate - 9th District:

Tom Killion: Local: 610-436-3320 / State: 717-787-4712  
[www.SenatorKillion.com](http://www.SenatorKillion.com)

#### State House - 156th District:

Carolyn Comitta: Local: 610-696-4990 / State: 717-705-2075  
[www.pahouse.com/Comitta](http://www.pahouse.com/Comitta)

#### U. S. Senators:

Robert Casey: Local: 215-405-9660 / Federal: 202-224-6324  
[www.casey.senate.gov](http://www.casey.senate.gov)  
 Pat Toomey: Local: 215-241-1090 / Federal: 202-224-4254  
[www.toomey.senate.gov](http://www.toomey.senate.gov)

#### Congress - 6th District:

Chrissy Houlahan: contact info not yet available  
[www.houlahan.house.gov](http://www.houlahan.house.gov)

#### For Police, Fire, & Medical Emergencies, DIAL 911.

#### For Non-Emergencies:

610-692-5100

### BULLETIN BOARD

#### Full Time Employment Opportunity – Public Works Laborer.

This position is responsible for maintenance and repair of roadways, trails, parks, right-of-ways, township maintained properties, snow removal, and storm and sanitary sewers. The desired applicant must have a HS diploma or GED, basic knowledge of operations of a municipal Public Works Dept, and applicable construction, mechanical, and trade experience. Valid PA driver's license required, and CDL Class B driver's license with air brake endorsement required within 6 months of hire. Must have the physical ability necessary to perform Public Works related duties. Pre-employment physical exam and drug testing is required. Starting salary DOE. Excellent benefits package. Submit letter of interest with resume to [publicworks@westtown.org](mailto:publicworks@westtown.org).

#### Zoning Hearing Board Alternate Vacancy.

The ZHB alternate is called upon to participate in and vote on matters that fall under the responsibility of the ZHB when a regular member is unable to do so. You must be a resident of Westtown, cannot hold any other office in the Township, and cannot be related to any current Township employee. Applicants must be in good standing with all municipal bills. More information on the position is available on the township website [westtownpa.org/zoning-board/](http://westtownpa.org/zoning-board/). Interested candidates should send a cover letter and resume to Township Manager Rob Pingar ([rpingar@westtown.org](mailto:rpingar@westtown.org)).

**Routine On-Lot Inspections.** Routine inspections and pumping are due every three years after your previous inspection or waiver, by October 31 of that year. Additional information on the SMP is provided on the township website [westtownpa.org/onlot](http://westtownpa.org/onlot).

**Stay Informed.** To receive information about meetings, special events, and public service announcements via email, please go to the Township website and click on the blue Get Email Alerts button at the top of any page.

**Ready Chesco.** To sign up for Chester County's electronic notification system for emergency information go to [readychesco.org](http://readychesco.org).

**Pay Sewer and Trash Bills Online.** Westtown residents can use Visa, Master Card, and Discover to pay their utility bills online at [westtownpa.org](http://westtownpa.org). There is no fee for this service.

**Save paper!** If you would like to receive the *Westtown Gazette* electronically, send an email to [info@westtown.org](mailto:info@westtown.org) and request to be put on the electronic delivery list.

# Planning & Zoning Projects Update

## **Westtown School 2018-09 - Conditional Use Application for Outdoor Lighting and Ordinance Amendment**

(to be reviewed by the Board of Supervisors, Jan 2019)

Westtown School has submitted a conditional use application to construct 6 poles with lights, to illuminate two proposed, artificial turf playing fields from 6pm to 9:45 pm, Monday - Saturday (except from June 15 - August 15, and Federal Holidays), about 240 nights annually. A new parking lot, field house with bathrooms and concession area, and viewing stands will be constructed in conjunction with the playing fields. Private sports organizations will rent the playing fields during these hours (soccer, lacrosse, and/or field hockey). Westtown School sports will utilize the fields during the day and for four games each year. The current Westtown Outdoor lighting ordinance only permits 20 illuminated night events per year, so Westtown School has submitted an ordinance amendment along with their application that would permit 240 illuminated events per year (along with other conditions). The Planning Commission conducted five meetings with Westtown School (9/5/18, 10/3/18, 10/17/2018, 11/7/18, 11/28/18). At their last meeting, the Planning Commission adopted three motions; the first to deny the application, and two others with recommended conditions in case the Board decides to approve it. For details, go to the Township's website at [westtownpa.org/planning-commission/](http://westtownpa.org/planning-commission/).

## **Malvern School Conditional Use Application 2018-03**

(Prelim/Final Plans to be reviewed by Planning Commission on January 23)

The Malvern School is proposing to locate a preschool at 1081 Wilmington Pike, Westtown Township. The property is a (+/-) 2.5 acres, vacant parcel at the corner of Wilmington Pike (202) and East Pleasant Grove Rd, and is currently zoned R-3 Residence-Office District. The proposal calls for a one-story 11,000 sq ft building, outdoor play areas, 49 parking spaces, lighting, and landscaping. The school would accommodate a total enrollment of 170 children ages 6 weeks to 8 years old, and would employ a total of 34 employees. The application has been approved by the Planning Commission and Board of Supervisors, however the preliminary/final development plans are now scheduled to be presented first before the Planning Commission on January 23, 2019. If approved, they will be forwarded to the Board for approval in February or later.

## **Jaguar/Land Rover of West Chester 2017-03 (Extension granted to 6/30/2019)**

Jaguar/Land Rover of West Chester is proposing a commercial building expansion (land development) at 1568 West Chester Pike (UPI 67-2-42.4A). This is a 3.669-acre parcel which is serviced by public water and sewer. This application was under review by the Township's engineer and Chester Co. Planning Commission. The developer is still negotiating with PennDOT regarding a new entrance off of State Route 3 (West Chester Pike). Once the Township has all comment letters in hand, the proposal will be added to the next available Planning Commission agenda. The applicant has granted the Township an extension on the review time for the application, to expire by June 30, 2019.

## **Toll Brothers - Crebilly Farm (ongoing)**

Toll Brothers has submitted a conditional use application to construct a minimum of 317 residential dwellings on the Crebilly tract utilizing the flexible development procedure. Further, they have indicated a desire to utilize bonus densities in order to construct up to 397 units on the tract. In order to utilize the bonus densities, Toll must provide public infrastructure/amenities in excess of what is required for their development. On December 28, 2017 the Board of Supervisors voted to deny the Toll Brothers/Crebilly Farm Conditional Use application. The written decision was issued February 12, 2018.

On March 6, 2018 Toll filed an appeal of the Board of Supervisor's denial of their Conditional Use Application, to the Pennsylvania Court of Common Pleas in Chester County. On October 1, 2018, the Honorable Judge Tunnell upheld the Board's February 12, 2018 denial of Toll Brothers Conditional Use Application. Soon thereafter, Toll appealed Judge Tunnell's decision to the Commonwealth Court. It is estimated that the Commonwealth Court will decide this case by the fall of 2019.

# Updating Township History

## The Historical Commission is expanding a 1973 edition of Westtown's past

By Gail Guterl, Historical Commissioner

Although small - 11,000 residents in 8.8 square miles - Westtown is rich in history. In 1973, Westtown resident Arthur James recognized that and wrote a book about the township's past. James, a professor of Chemistry who taught at Lincoln University, Temple University, and the University of Peshawar in Pakistan, died in 1989. His book outlines how the township formed, who lived here, notable early homes and farms, and other facts. Although born in East Bradford Township, the James family had a long history in the township. His ancestors were connected to a thriving township enterprise, James Pottery, of which there are examples at the Chester County Historical Society, and he lived in the township for many years.

Since its publication, *James' From Farmland to Suburbia: Westtown Township Chester County Pennsylvania* has been the go-to document for information on township history. However, since the Westtown Township Historical Commission formed in 2013, we have learned so much more through research done by commission members and from information submitted by Westtown residents.

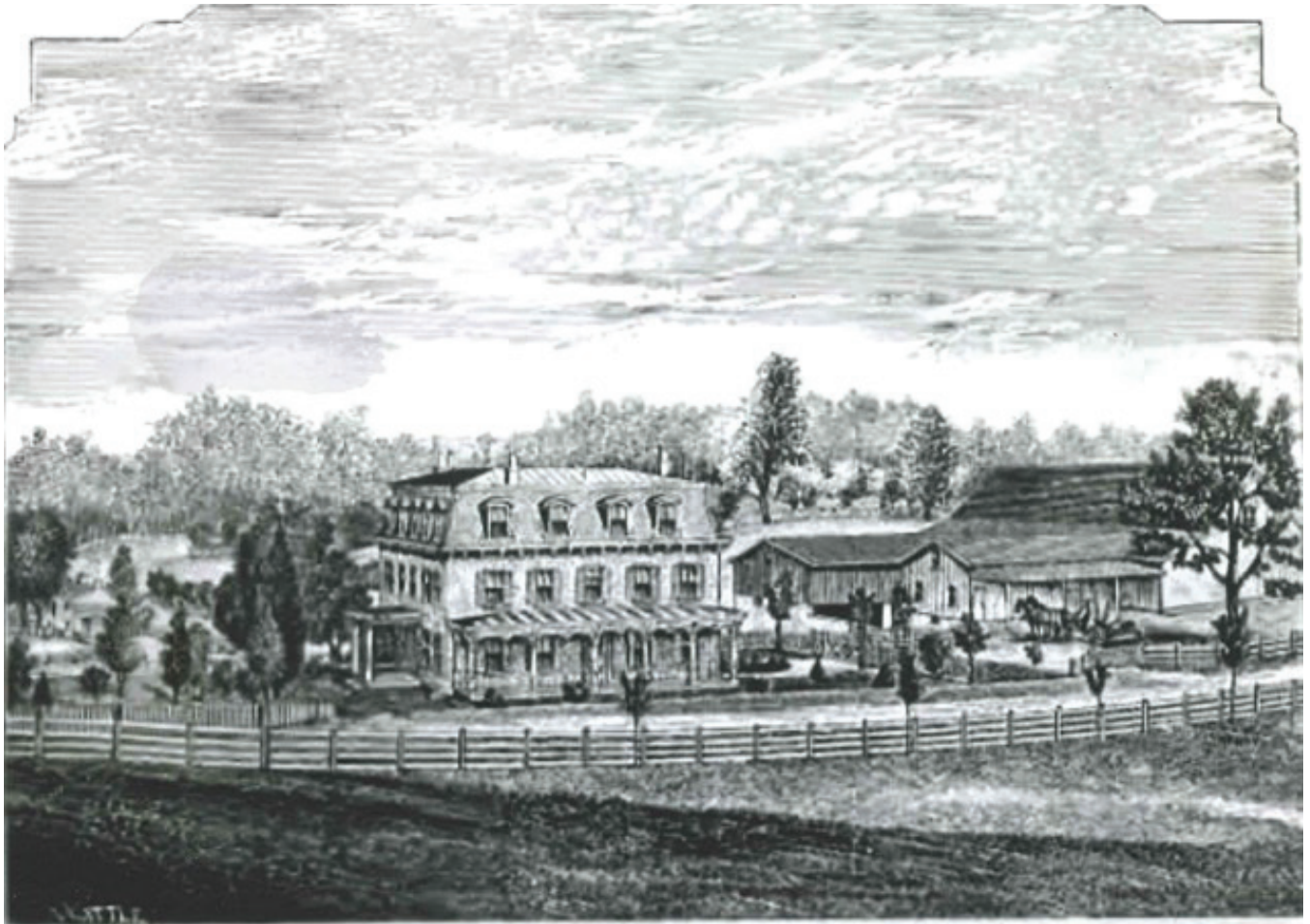
So, in 2018, the commission began discussions with Arthur James' surviving children, ages 93 and 89, about acquiring the copyright to the book in order to update it. The family legally transferred the copyright to the township in May 2018, and soon after that the Historical Commission got to work. (In a wonderful coincidence, the King of Prussia attorney who drafted the document grew up in Westtown and did the work pro bono.)

The Commission's plan is to expand and update the 59-page book and post our efforts on the Historical Commission's page on the township's website. We hope to have the book online in May, 2019. We have opted to publish it electronically at this point to allow for frequent additions. In our research and through contributions by township residents, we are always discovering new and exciting facts of township history such as:

- In the 18th century, a silver mine operated on the western edge of Westtown Township.
- Several free African Americans living in the township fought in the Civil War as part of the U.S. Colored Troops, and are buried in a neglected cemetery in the center of the township.
- The Westtown Post Office is in Thornbury Township and at one time the Thornbury Post Office was in Westtown.
- The township has a rare geology, serpentine rock, found also in Maryland, Oregon, and California. Serpentine stone was once quarried at the western edge of the township.
- Clothing was so valuable it was handed down from one generation to the next in last wills and testaments and most people never wore brand new clothes in their lifetime.
- One of our township's farmers was a member of the Flying Farmers Association who taught himself to pilot his own plane, which he taxied from a field on his farm.
- There is a Westtown link to the CIA.
- A property and house ruin in the township may have been impacted by the Battle of Brandywine, Sept. 11, 1777. While the main battle was fought in Birmingham Township, history has shown that skirmishes were fought on Westtown land.
- In the 1940s, Wilmington Pike was so quiet one could cross the road easily to catch a bus into West Chester. Bus fare was only 5 cents.

The Commission hopes to present as complete a picture as possible of our township's history including information about the native population that originally lived in this area, the Lenni Lenape. The history will provide expanded information on old houses and farmsteads in the township.





RESIDENCE OF GEORGE FAUCETT, WESTTOWN.

*Things Change: The township's updated history book will highlight events, structures, and people that made their mark on the township, as well as how the township evolved. For example, the topography of the township has changed over the years in areas bordering Rt. 202. This illustration from Futhey and Cope's History of Chester County published in 1881, shows the Faucett family house and farm, later owned by the Cheyney family, on Wilmington Pike on the northern border of the township, on what is now Rt. 202. For years the house was at street level, but as the highway was expanded, first in 1939 and then in the 1950s, Rt. 202 was elevated and only the second and third story windows were visible from the highway. The house was torn down in 2015 and is now the site of a new development, Westtown Woods.*

Besides our research in the county archives and at the Chester County Historical Society, the book will offer personal recollections from long-time residents. If you have any information you'd like to share with the Commission for this history, please don't hesitate to contact us at [historical@westtown.org](mailto:historical@westtown.org).

We will give plenty of notice before the history is uploaded to the township website at [www.westtownpa.org](http://www.westtownpa.org), so watch for the announcement.

## INTERESTED IN IMPROVING YOUR BEAUTIFUL TOWNSHIP PARK?

Please join us at the Friends of Oakbourne's upcoming meetings at 7:00 pm on January 17 or April 18, 2019 at Oakbourne mansion. Contact Tom Bare ([tmbare@hotmail.com](mailto:tmbare@hotmail.com) or 610-399-1572) if you are interested in donating a park bench or tree to be planted in Oakbourne Park to honor a special person or loved one or to commemorate an important occasion.

# Our First Year at the Westtown Community Garden

by Tom Wittig



A bountiful Community Garden box.

My wife Stephanie and I were so excited to join the Westtown Community Garden this past summer. Her grandfather had grown roses throughout her childhood and my mother grew sunflowers, so we were both interested in starting a garden of our own.

The Westtown Community Garden in beautiful Oakbourne Park offers a great opportunity for novice to seasoned gardeners to grow delicious fruits and vegetables. There are 30 plots in the garden, each with their own personality. Half the fun is walking around to see what everyone else is growing and get ideas for the following season.

As first-time gardeners, we were fortunate to be surrounded by very helpful community members. Despite all of the great advice, we still made some regrettable decisions, like planting four cucumber plants when one would have been plenty, but that's all part of the experience. You truly feel satisfied when it's finally harvest day, and you get to start eating the delicious food you've been watching grow for 10 weeks. By July, any time a family member or friend stopped over to visit us, they left with bags of tomatoes and cucumbers.

The garden is truly alive and it really takes a village to keep it neat and maintained. Thankfully, the Westtown Community Garden members all pitch in throughout the season to keep the garden looking great. Local farm Pete's Produce donated aged mushroom soil this year to keep everyone's plots nutrient rich all winter into the next season.

There are a few plots available for next season, so if you're interested in joining in 2019, please contact Pam Coleman at the township office ([pcoleman@westtown.org](mailto:pcoleman@westtown.org)) or email the garden committee chair, Julie Weidinger, at [jmeos@comcast.net](mailto:jmeos@comcast.net) for information. It's a rewarding experience to grow your own produce and it's a great opportunity to meet other members in your local community. If you do decide to join, we'll happily share our tips with you now that we're officially gardeners ourselves.



# 22<sup>nd</sup> Annual CRC Streams Cleanup

Saturday, April 13, 2019

9:00 - 11:30

Please help us  
clean the streams!



Register online  
[crcwatersheds.org](http://crcwatersheds.org)

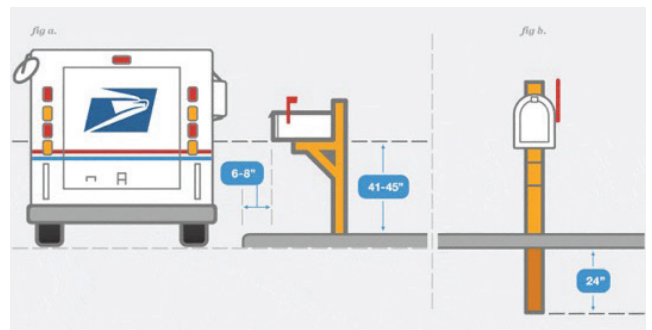
# Winter Weather Information

The Township Public Works Department begins salting operations at the beginning of a winter storm to keep the snow and ice from bonding with the paved surface, which makes it difficult to remove. Snow removal begins when snow has accumulated on the road surface, and continues for the duration of the storm. The initial focus is to open and clear heavily travelled collector roads, and then low volume roads and developments. After initial clearance is made on the roads, the drivers will work on pushing snow back. Depending on the timing and duration of a storm, it may take up to six hours after the snow has stopped to clear the roads.

To avoid having your driveway plowed shut, leave the last 10 feet of your driveway un-shoveled until we are finished. Another method is to clear 15 feet of the shoulder to the left of your driveway (when facing the street). That will allow a snowplow blade full of snow to unload and deposit the snow before it reaches your driveway. Do not place shoveled, blown, or plowed snow from driveways or sidewalks onto public streets.

The 90+ cul-de-sacs within the Township are the most challenging and time consuming areas to plow because the area where plowed snow can be placed is limited due to the short distance between driveway openings, mailboxes, and stormwater drains. Cars parked in cul-de-sacs exacerbate the problem. Due to these constraints and safety issues, the Township may not plow cul-de-sacs if cars are parked in them.

The Public Works Department would like to remind residents of the policy regarding mailboxes damaged during snowplowing operations. Most often, damage to mailboxes is sustained from snow as it comes off of the plow. A sound post and securely attached mailbox will not be knocked over by snow coming off the plow. It is helpful to use a reflector to make your mailbox more visible to plow drivers. Also check that the placement of your mailbox in the right-of-way follows the US Postal Service Standards for Residential Mailboxes shown in the diagram.



Plow drivers are instructed to drive as slowly as realistically possible in order to minimize problems with mailboxes. However, mailboxes are considered an encroaching, albeit official, structure in the right-of-way and the township is not responsible for damage. The township will not replace mailboxes damaged by snow coming off the plow.

**Please do your part to help the township safely and efficiently remove snow this winter!**

## FULL TIME EMPLOYMENT OPPORTUNITY - PUBLIC WORKS LABORER

This position is responsible for maintenance and repair of roadways, trails, parks, right-of-ways, township maintained properties, snow removal, and storm and sanitary sewers. The desired applicant must have a HS diploma or GED, basic knowledge of operations of a municipal Public Works Dept, and applicable construction, mechanical, and trade experience. Valid PA driver's license required, and CDL Class B driver's license with air brake endorsement required within 6 months of hire. Must have the physical ability necessary to perform Public Works related duties. Pre-employment physical exam and drug testing is required. Starting salary DOE. Excellent benefits package. Submit letter of interest with resume to [publicworks@westtown.org](mailto:publicworks@westtown.org).



# Proper Use of Backup Generators During Power Outages

During long-term power outages many residents rely on portable generators for emergency power. The popularity of portable electric generators has grown, but it's estimated that only a small percentage are hooked up correctly. If installed and operated correctly, use of standby or portable electric generators poses little danger, but improper installation or use could be dangerous to you and threaten the lives of your family, friends, neighbors, and electric utility crews trying to restore service. Incorrect generator use can lead to carbon monoxide (CO) poisoning from the toxic engine exhaust, shock or electrocution, and fire.

We offer these tips for the safe operation and use of portable generators:

## **Never use a portable generator indoors**

- Never use a portable generator in a garage, carport, basement, crawl space or other enclosed or partially-enclosed area, even with ventilation. Opening doors and windows or using fans will not prevent CO buildup in the home.
- If you start to feel sick, dizzy, or weak while using a generator, get to fresh air right away!
- Install home CO alarms that are battery-operated or have battery back-up. Test batteries frequently and replace when needed.

## **Using your generator outdoors**

- Place it in a dry, outside location, away from windows, doors, and vents that could allow CO to come indoors.
- Generators should be at least 20 feet away from buildings. Even 20 feet away, air flow patterns could still blow carbon monoxide into homes through attic vents, windows, or doors, so it's very important to have a working carbon monoxide detector inside the home.
- To avoid electrocution, keep the generator dry. Do not use in rain or wet conditions. Operate it on a dry surface under an open canopy-like structure. Make sure your hands are dry before touching the generator.

## **Use and store generator fuel safely**

- Turn generator off and let it cool before refueling. Gas spilled on hot engine parts could ignite.
- Store generator fuel in an approved safety can outside of living areas in a locked shed or other protected area.
- If you spill fuel or do not seal its container properly, invisible vapors can travel along the ground and be ignited by an appliance's pilot light or arcs from electric switches in the appliance.
- Use the type of fuel recommended in the generator instructions or on its label.

## **Connect your generator correctly**

- Protect your appliances. Turn off or disconnect all appliances and lights before you begin operating the portable generator. Once the generator is running, turn your appliances and lights on one at a time to avoid overloading the unit.
- Use proper extension cords. Use only safety-tested, shop-type electrical cords designed and rated for heavier, outdoor use to connect appliances. Many generators are equipped with twist-lock connects to reduce the chance of accidental disconnections due to vibrations.
- Never try to power house wiring by plugging the generator into a wall outlet, a practice known as "back feeding." It can lead to the electrocution of utility workers or neighbors served by the same utility transformer.
- The only safe way to connect a generator to house wiring is to have a qualified electrician install a power transfer switch.

## **Shut down your generator correctly**

- Shut down generator properly. Before shutting down a generator, turn off and unplug all appliances and equipment being powered by the generator.
- Maintain generator between uses. It's important to drain the gasoline from the generator while it is being stored. It's also a good idea to inspect the fuel and oil filters, spark plug, oil level, and fuel quality and start the generator on a regular basis before an emergency situation happens.

# Meetings & Events

## JANUARY, 2019

- 7, 22 – Board of Supervisors
- 9, 23 – Planning Commission
- 12 – Yard Waste Collection
- 8 – Parks & Recreation
- 17 – Historical Commission
- 17 – Friends of Oakbourne

## FEBRUARY, 2019

- 4, 19 – Board of Supervisors
- 6, 20 – Planning Commission
- 9 – Yard Waste Collection
- 12 – Parks & Recreation
- 21 – Historical Commission

## MARCH, 2019

- 4, 18 – Board of Supervisors
- 6, 20 – Planning Commission
- 9 – Yard Waste Collection
- 12 – Parks & Recreation
- 21 – Historical Commission

**BOARD OF SUPERVISORS** – 7:30 pm  
**HISTORICAL COMMISSION** – 6:00 pm  
**PLANNING COMMISSION** – 7:30 pm  
Township Municipal Building  
1039 Wilmington Pike, Westtown

**FRIENDS OF OAKBOURNE** – 7:00 pm  
**PARKS AND RECREATION** – 7:00 PM  
Oakbourne Mansion  
1014 S. Concord Road, Westtown



# Where Does Your Trash and Recycling Go? Take a tour and find out!

Ever wonder what happens to your trash and recycling after the hauler collects it? Trash is transported to the Lanchester Landfill in Narvon, PA, operated by the Chester County Solid Waste Authority (CCSWA). The CCSWA conducts tours for school and civic groups, and holds an annual open house every fall. The landfill is no dump! There are over 5 miles of walking trails where visitors can observe various areas of the facility, and the abundant wildlife including eagles, pheasants, wild turkeys, egrets, swans, deer, turtles, bullfrogs, and butterflies. As part of their conservation program, the CCSWA also maintains nesting boxes, and raises goats, sheep, and zebu. Kids will enjoy the playground and watching the huge construction equipment at work. The landfill also offers residential services such as small load drop-off, compost material, and recycling. For more information on the CCSWA or to schedule a tour, visit [chestercountyswa.org](http://chestercountyswa.org).

Recyclables are processed at a Materials Recycling Facility, or “Merf.” TotalRecycle, Inc. in Birdsboro, PA also offers community tours of their facility. Guests are first given an overview of the recycling process at their education center, and then don hard hats and safety glasses before entering the processing plant to learn about the entire sorting process of single stream material. For more information visit [www.jpmscaro.com](http://www.jpmscaro.com).

APR

13

**SAVE THE DATE  
EASTER EGG HIKE**

**Oakbourne Park | 1014 S. Concord Road**

*Visit the Parks & Open Space page on the township website for more info.*

# When Recycling – Think Quality, Not Quantity

Many people are still operating under the misconception that recycling every possible scrap of paper, metal, plastic, and glass is the most environmentally sound practice. “Aspirational recycling” is severely limiting the marketability of material worldwide. Most notably, China is no longer accepting U.S. recyclables due to the high rate of contamination.

Here’s a guide for what **NOT** to put in the recycling bin:

- Anything with food waste in it - You don’t have to wash containers, but rinse to remove food scraps and residue.
- Plastic bags and film – These items get stuck in the processing machinery, resulting in expensive repairs and down time. Recycle CLEAN plastic bags, and plastic film packaging at the grocery store.
- Empty snack bags
- Greasy pizza boxes
- Used paper plates, napkins, paper towels, tissues, or diapers
- Paper cups (e.g. coffee cups, fast food drink cups) – The thin plastic lining that help prevent cups from leaking makes it difficult to process.
- Plastic straws or takeaway cup lids
- Plastic utensils
- Styrofoam
- Scrap metal, hangers, aluminum siding, or metal cookware

If you want to do something positive for the planet by recycling, then do it right. When in doubt, throw it out!



# General Trash Information

## 2019 Holiday Pickup Schedule

Trash will not be collected on New Year’s Day, Memorial Day, Labor Day, and Thanksgiving. For **Monday pickups**, trash and recycling will be collected the **Saturday before** the holiday; **Thursday pickups** will be collected the **Saturday after** the holiday.

## Household Hazardous and Electronic Waste Collection

**Pennsylvania law prohibits the disposal of hazardous waste or E-waste in the regular trash.** Visit [chestercountyswa.org](http://chestercountyswa.org) for hazardous waste collection events scheduled throughout the county.

Tube TV’s, computer monitors, appliances, and other electronics can be disposed of at the Lanchester Landfill for FREE through the end of the year (7224 Division Highway, Narvon, PA 17555). Residents can bring up to 3 items per day. Retailers and E-waste collection events are now charging for TVs and computer monitors, so take advantage of this service!

## Bulk Items

Large items will be taken on the last collection date of the month. You may put out 3 large items, such as appliances (without Freon) and furniture. **Construction debris (shingles, drywall, lumber, etc.) will not be collected.** If you are unsure about the disposal of a bulk item, please contact the Township.

## Yard Waste

**Collected on scheduled days.** Must be in paper bags or a container that can be dumped. Branches no more than 3” in diameter & 3’ in length must be bundled & tied. Yard waste collection dates are posted on the Township website [westtownpa.org](http://westtownpa.org), and on your utility bills. Pickup reminders are emailed to residents who subscribe to the township listserv. Subscribe on the website.

An advertisement for A.J. Blosenski Inc. Trash &amp; Recycling Service. The ad features a red truck, a roll-off dumpster, and a compact container. Text includes: Discount Code: Westtown \$25.00 off a Roll-off Dumpster \$10.00 off Junk Removal Service. A.J. Blosenski Inc. www.ajblosenski.com 610.942.2707. Four Generations of Quality Service from the Blosenski Family. Services include: 96 Gallon Carts Available, Bulk Item Removal, Special Cleanups, Roll-off Dumpsters, Storage Containers, Commercial Compactors, 1-40 Yard Containers, Event &amp; Party Boxes, 100% Customer Satisfaction. Contact: 15 cubic yards (140 bags / 20 cubic / 52 High), 30 cubic yards (228 bags / 80 cubic / 65 High). Servicing Westtown Township. Discount cannot be combined with any other offer.





Westtown Township  
 1039 Wilmington Pike  
 P.O. Box 79  
 Westtown, Pennsylvania 19395

Prsrtd Std  
 U.S. Postage  
**PAID**  
 West Chester PA  
 Permit No 10



# 2019 YARD WASTE AND HOLIDAY TRASH SCHEDULE

<b>JAN</b> 12	<b>FEB</b> 9	<b>MAR</b> 9	<b>APR</b> 13	<b>MAY</b> 11
Includes Tree Collection				
<b>MAY</b> 25	<b>JUN</b> 8	<b>JUL</b> 6	<b>JUL</b> 13	<b>AUG</b> 10
Holiday Make Up	Holiday Make Up			
<b>AUG</b> 31	<b>SEP</b> 14	<b>OCT</b> 12	<b>NOV</b> 9	<b>NOV</b> 23
Holiday Make Up				
<b>NOV</b> 30	<b>DEC</b> 7	<b>DEC</b> 21		
Holiday Make Up				