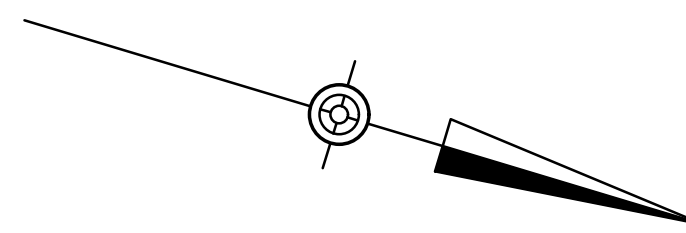


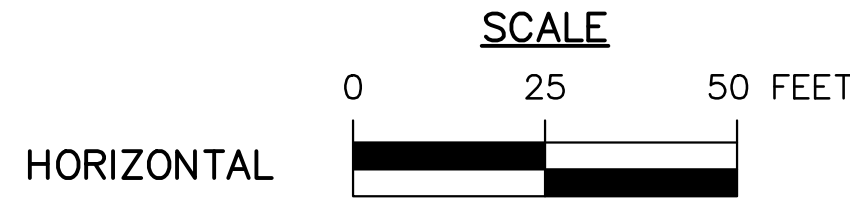
NOTES:

1. EXISTING CONDITIONS DEPICTED ON AERIAL IMAGERY FROM PENNSYLVANIA SPATIAL DATA ACCESS (PASDA).
2. LEGAL RIGHT-OF-WAY OBTAINED FROM CHESCO VIEWS.
3. ALL EXISTING AND PROPOSED CONDITIONS DEPICTED ON THIS EXHIBIT ARE CONCEPTUAL IN NATURE AND ARE NOT ABSOLUTE. THE ULTIMATE DESIGN OF THE PROJECT AND EXTENTS OF THE PROJECT'S IMPACTS TO THE SURROUNDING AREA WILL BE DETERMINED DURING PRELIMINARY ENGINEERING UTILIZING TOPOGRAPHIC SURVEY, DEED AND RIGHT-OF-WAY RESEARCH, UTILITY INVESTIGATION, AND ENGINEERING STUDIES.

DISTRICT	COUNTY	ROUTE	SECTION	SHEET
6-0	CHESTER	-	-	1 OF 1
WESTTOWN TOWNSHIP				
REVISION NUMBER	REVISIONS	DATE	BY	



LEGEND	
	EXISTING RIGHT-OF-WAY LINE
	PROPOSED ASPHALT PAVEMENT
	EXISTING UTILITY POLE
	EXISTING SIGN



**DRAFT**

I:\eng\816451 - Crebilly Farm.dwg\Concept\451CPT03.dwg, 7/20/2020 11:44:24 AM, DWG To PDF.pc3