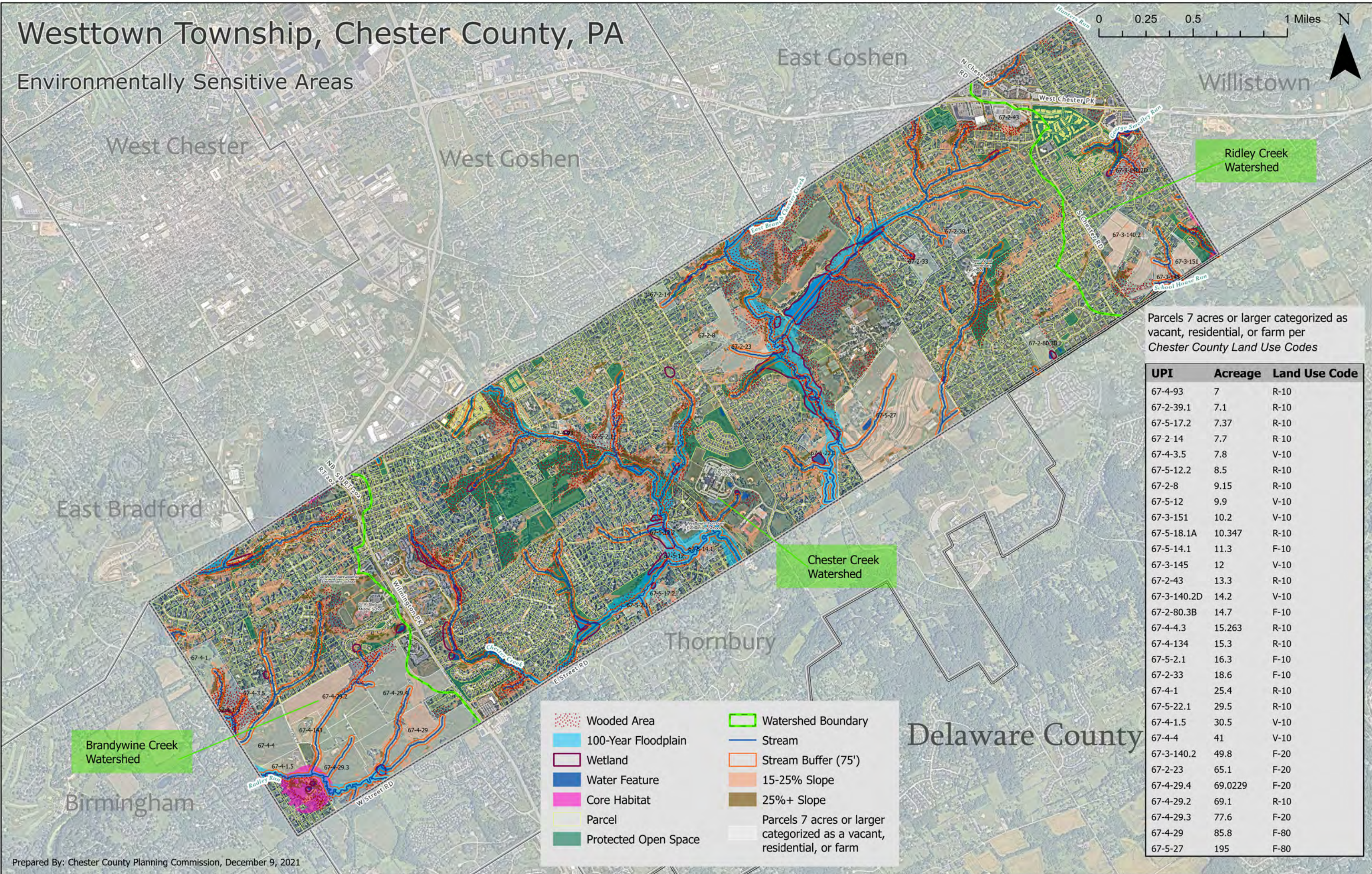


Westtown Township, Chester County, PA

Environmentally Sensitive Areas



Parcels 7 acres or larger categorized as vacant, residential, or farm per Chester County Land Use Codes

UPI	Acreage	Land Use Code
67-4-93	7	R-10
67-2-39.1	7.1	R-10
67-5-17.2	7.37	R-10
67-2-14	7.7	R-10
67-4-3.5	7.8	V-10
67-5-12.2	8.5	R-10
67-2-8	9.15	R-10
67-5-12	9.9	V-10
67-3-151	10.2	V-10
67-5-18.1A	10.347	R-10
67-5-14.1	11.3	F-10
67-3-145	12	V-10
67-2-43	13.3	R-10
67-3-140.2D	14.2	V-10
67-2-80.3B	14.7	F-10
67-4-4.3	15.263	R-10
67-4-134	15.3	R-10
67-5-2.1	16.3	F-10
67-2-33	18.6	F-10
67-4-1	25.4	R-10
67-5-22.1	29.5	R-10
67-4-1.5	30.5	V-10
67-4-4	41	V-10
67-3-140.2	49.8	F-20
67-2-23	65.1	F-20
67-4-29.4	69.0229	F-20
67-4-29.2	69.1	R-10
67-4-29.3	77.6	F-20
67-4-29	85.8	F-80
67-5-27	195	F-80

Wooded Area	Watershed Boundary
100-Year Floodplain	Stream
Wetland	Stream Buffer (75')
Water Feature	15-25% Slope
Core Habitat	25%+ Slope
Parcel	Parcels 7 acres or larger categorized as a vacant, residential, or farm
Protected Open Space	