

Westtown School Soccer

West Chester, PA

Lighting System

Pole / Fixture Summary						
Pole ID	Pole Height	Mtg Height	Fixture Qty	Luminaire Type	Load	Circuit
A1-A11	20'	20'	1	CREE OSQ	0.10 kW	D
A12-A13	20'	20'	1	CREE OSQ	0.10 kW	C
S1-S2	70'	70'	9	TLC-LED-1500	12.87 kW	A
S3	70'	70'	8	TLC-LED-1500	11.44 kW	A
		30'	1	CREE OSQ	0.10 kW	C
S4	70'	70'	8	TLC-LED-1500	11.44 kW	A
17			48		50.08 kW	

Circuit Summary			
Circuit	Description	Load	Fixture Qty
A	Soccer 1	48.62 kW	34
C	Sidewalk	0.31 kW	3
D	Parking	1.14 kW	11

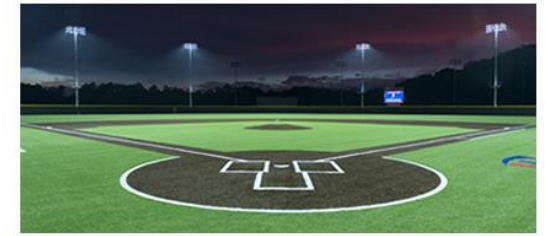
Fixture Type Summary							
Type	Source	Wattage	Lumens	L90	L80	L70	Quantity
TLC-LED-1500	LED 5700K - 75 CRI	1430W	160,000	>120,000	>120,000	>120,000	34
CREE OSQ	LED 5700K - 70 CRI	104W	15,295	--	--	--	14

Single Luminaire Amperage Draw Chart							
Driver (.90 min power factor)	Max Line Amperage Per Luminaire						
Single Phase Voltage	208 (60)	220 (60)	240 (60)	277 (60)	347 (60)	380 (60)	480 (60)
TLC-LED-1500	8.5	8.1	7.4	6.4	5.1	4.7	3.7
Cree OSQ	-	-	-	-	0.3	-	0.2

Light Level Summary

Calculation Grid Summary								
Grid Name	Calculation Metric	Illumination					Circuits	Fixture Qty
		Ave	Min	Max	Max/Min	Ave/Min		
Soccer 1	Horizontal Illuminance	51.8	41	71	1.72	1.26	A	34

From Hometown to Professional



We Make It Happen.

Not to be reproduced in whole or part without the written consent of Musco Sports Lighting, LLC. ©1981, 2023 Musco Sports Lighting, LLC.

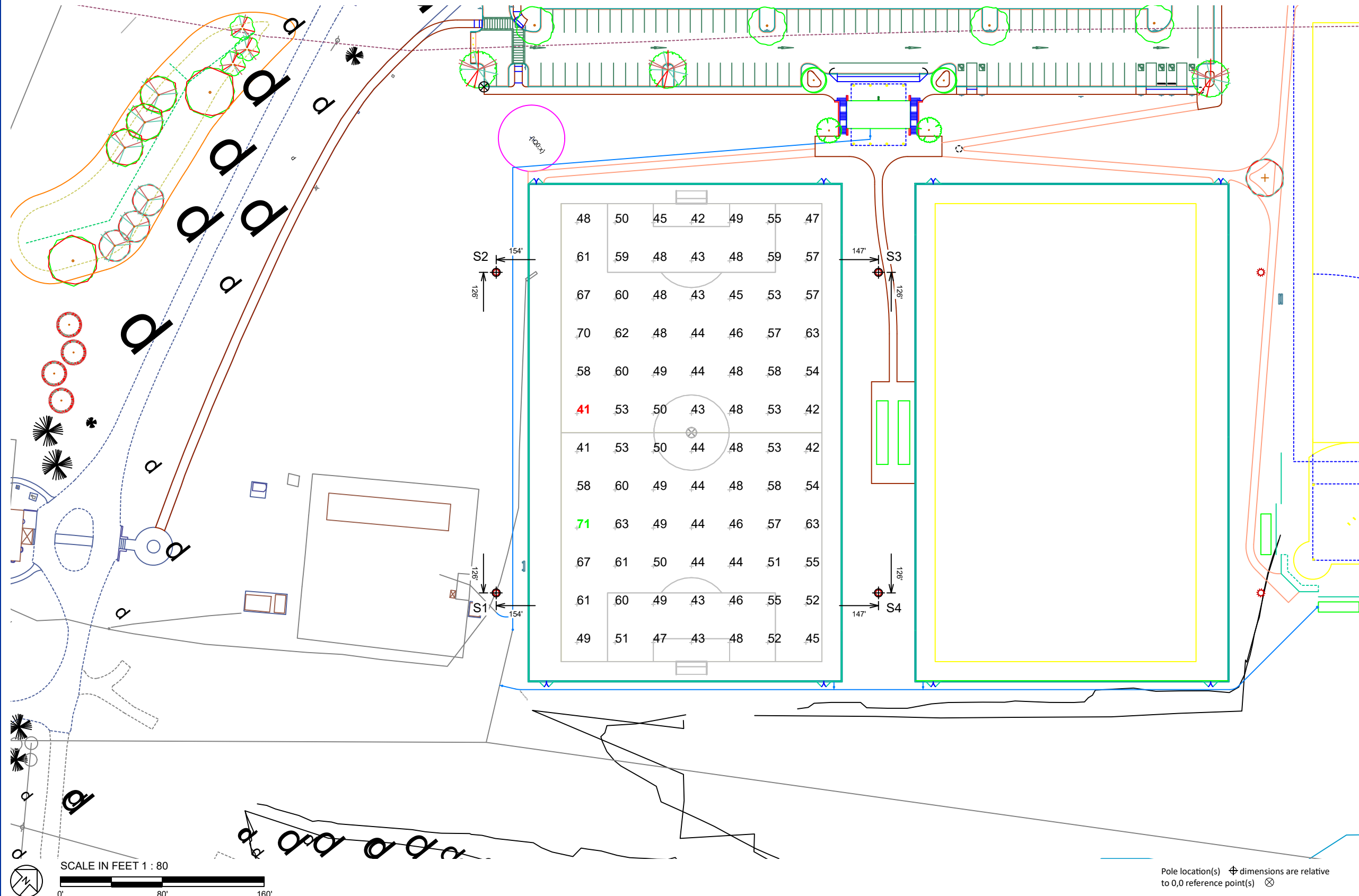
EQUIPMENT LIST FOR AREAS SHOWN								
Pole				Luminaires				
QTY	LOCATION	SIZE	GRADE ELEVATION	MOUNTING HEIGHT	LUMINAIRE TYPE	QTY / POLE	THIS GRID	OTHER GRIDS
2	S1-S2	70'	-	70'	TLC-LED-1500	9	9	0
1	S3	70'	-	30'	CREE OSQ	1	0	1
1				70'	TLC-LED-1500	8	8	0
1	S4	70'	-	70'	TLC-LED-1500	8	8	0
4	TOTALS					35	34	1

Westtown School Soccer

West Chester, PA

GRID SUMMARY	
Name:	Soccer 1
Size:	360' x 205'
Spacing:	30.0' x 30.0'
Height:	0.0' above grade

ILLUMINATION SUMMARY	
MAINTAINED HORIZONTAL FOOTCANDLES	
Entire Grid	
Guaranteed Average:	50
Scan Average:	51.77
Maximum:	71
Minimum:	41
Avg / Min:	1.26
Guaranteed Max / Min:	2
Max / Min:	1.72
UG (adjacent pts):	1.41
CU:	0.72
CV:	0.14
No. of Points:	84
LUMINAIRE INFORMATION	
Applied Circuits:	A
No. of Luminaires:	34
Total Load:	48.62 kW

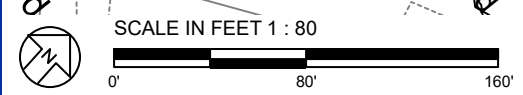


Guaranteed Performance: The ILLUMINATION described above is guaranteed per your Musco Warranty document and includes a 0.95 dirt depreciation factor.

Field Measurements: Individual field measurements may vary from computer-calculated predictions and should be taken in accordance with IESNA RP-6-15.

Electrical System Requirements: Refer to Amperage Draw Chart and/or the "Musco Control System Summary" for electrical sizing.

Installation Requirements: Results assume ± 3% nominal voltage at line side of the driver and structures located within 3 feet (1m) of design locations.



Pole location(s) ⚓ dimensions are relative to 0,0 reference point(s) ⊗



EQUIPMENT LIST FOR AREAS SHOWN								
Pole				Luminaires				
QTY	LOCATION	SIZE	GRADE ELEVATION	MOUNTING HEIGHT	LUMINAIRE TYPE	QTY / POLE	THIS GRID	OTHER GRIDS
2	A12-A13	20'	-	20'	CREE OSQ	1	1	0
2	S1-S2	70'	-	70'	TLC-LED-1500	9	9	0
1	S3	70'	-	30'	CREE OSQ	1	1	0
				70'	TLC-LED-1500	8	8	0
1	S4	70'	-	70'	TLC-LED-1500	8	8	0
6	TOTALS					37	37	0

Westtown School Soccer

West Chester, PA

GRID SUMMARY	
Name:	Sidewalk
Size:	360' x 205'
Spacing:	10.0' x 10.0'
Height:	0.0' above grade

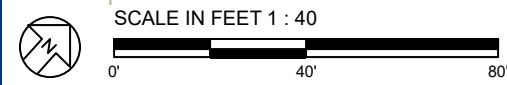
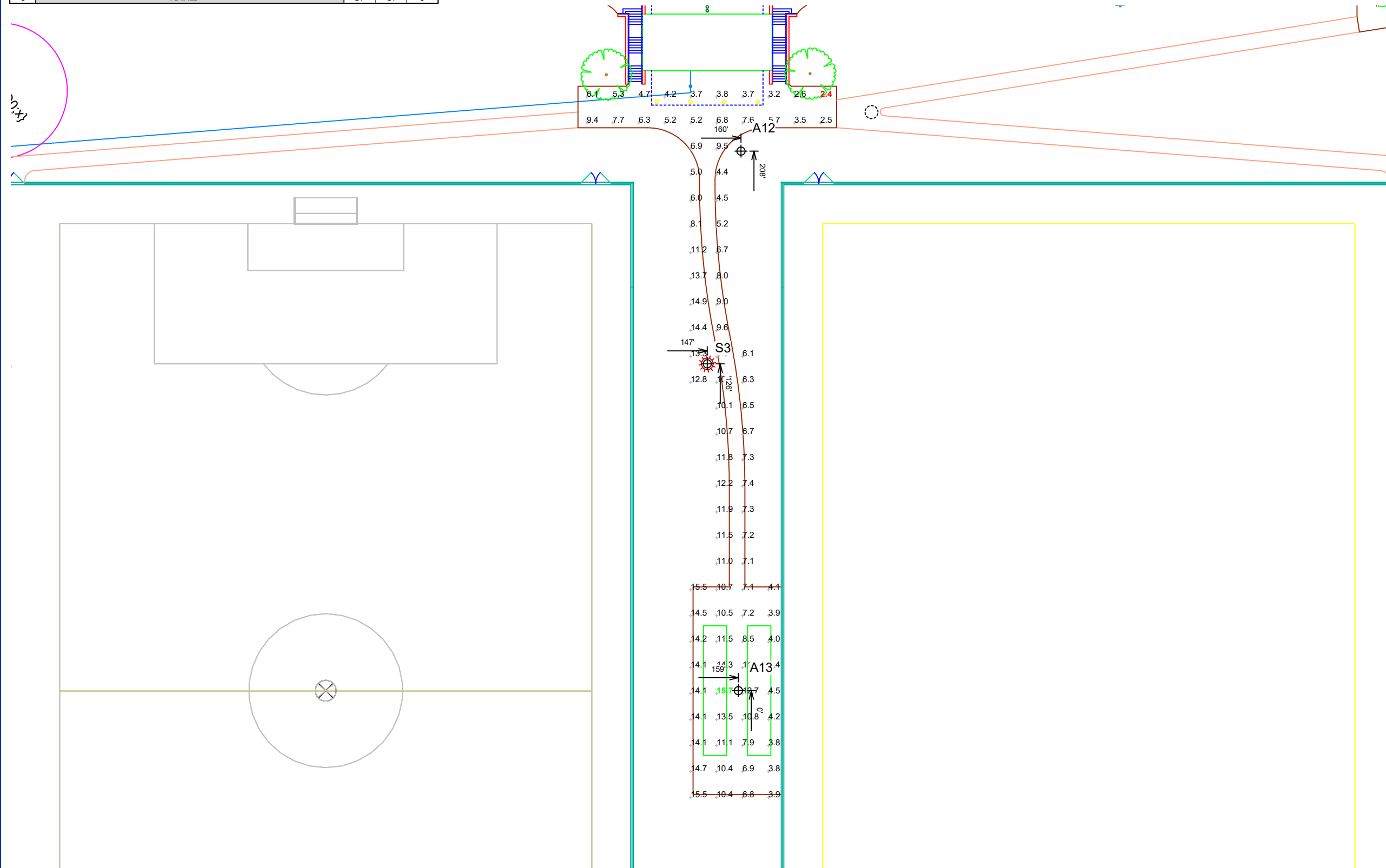
ILLUMINATION SUMMARY	
MAINTAINED HORIZONTAL FOOTCANDLES	
Entire Grid	
Guaranteed Average:	5
Scan Average:	8.47
Maximum:	16
Minimum:	2
Guaranteed Avg / Min:	4
Avg / Min:	3.48
Max / Min:	6.46
UG (adjacent pts):	2.80
CU:	0.01
No. of Points:	92
LUMINAIRE INFORMATION	
Applied Circuits:	A, C
No. of Luminaires:	37
Total Load:	48.93 kW

Guaranteed Performance: The ILLUMINATION described above is guaranteed per your Musco Warranty document and includes a 0.95 dirt depreciation factor.

Field Measurements: Individual field measurements may vary from computer-calculated predictions and should be taken in accordance with IESNA RP-6-15.

Electrical System Requirements: Refer to Amperage Draw Chart and/or the "Musco Control System Summary" for electrical sizing.

Installation Requirements: Results assume ± 3% nominal voltage at line side of the driver and structures located within 3 feet (1m) of design locations.



Pole location(s) ⊕ dimensions are relative to 0,0 reference point(s) ⊗



EQUIPMENT LIST FOR AREAS SHOWN								
Pole				Luminaires				
QTY	LOCATION	SIZE	GRADE ELEVATION	MOUNTING HEIGHT	LUMINAIRE TYPE	QTY / POLE	THIS GRID	OTHER GRIDS
2	A12-A13	20'	-	20'	CREE OSQ	1	1	0
1	S3	70'	-	30'	CREE OSQ	1	1	0
3				70'	TLC-LED-1500	8	0	8
TOTALS						11	3	8

Westtown School Soccer

West Chester, PA

GRID SUMMARY	
Name:	Sidewalk - Emergency
Size:	360' x 205'
Spacing:	10.0' x 10.0'
Height:	0.0' above grade

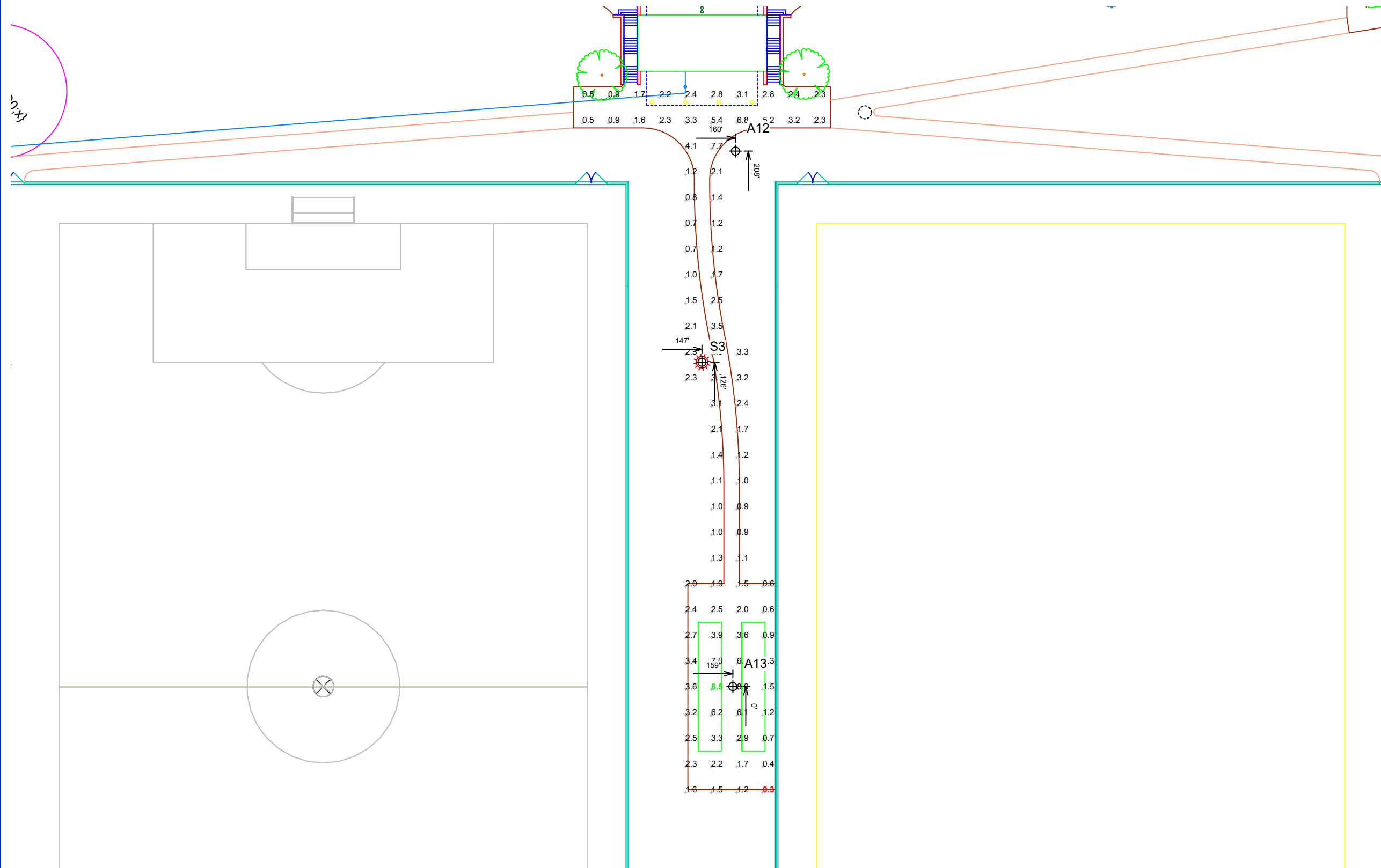
ILLUMINATION SUMMARY	
MAINTAINED HORIZONTAL FOOTCANDLES	
Entire Grid	
Guaranteed Average:	1
Scan Average:	2.47
Maximum:	9
Minimum:	0
Avg / Min:	8.10
Max / Min:	27.96
UG (adjacent pts):	5.28
CU:	0.47
No. of Points:	92
LUMINAIRE INFORMATION	
Applied Circuits:	C
No. of Luminaires:	3
Total Load:	0.31 kW

Guaranteed Performance: The ILLUMINATION described above is guaranteed per your Musco Warranty document and includes a 0.95 dirt depreciation factor.

Field Measurements: Individual field measurements may vary from computer-calculated predictions and should be taken in accordance with IESNA RP-6-15.

Electrical System Requirements: Refer to Amperage Draw Chart and/or the "Musco Control System Summary" for electrical sizing.

Installation Requirements: Results assume ± 3% nominal voltage at line side of the driver and structures located within 3 feet (1m) of design locations.



Pole location(s) ⊕ dimensions are relative to 0,0 reference point(s) ⊗



We Make It Happen.

EQUIPMENT LIST FOR AREAS SHOWN								
Pole			Luminaires					
QTY	LOCATION	SIZE	GRADE ELEVATION	MOUNTING HEIGHT	LUMINAIRE TYPE	QTY / POLE	THIS GRID	OTHER GRIDS
11	A1-A11	20'	-	20'	CREE OSQ	1	1	0
11	TOTALS					11	11	0

Westtown School Soccer

West Chester, PA

GRID SUMMARY	
Name:	Parking
Size:	
Spacing:	10.0' x 10.0'
Height:	0.0' above grade

ILLUMINATION SUMMARY	
MAINTAINED HORIZONTAL FOOTCANDLES	
Entire Grid	
Guaranteed Average:	2
Scan Average:	2.60
Maximum:	8
Minimum:	1
Guaranteed Avg / Min:	5
Avg / Min:	4.56
Max / Min:	14.50
UG (adjacent pts):	2.13
CU:	0.49
No. of Points:	330

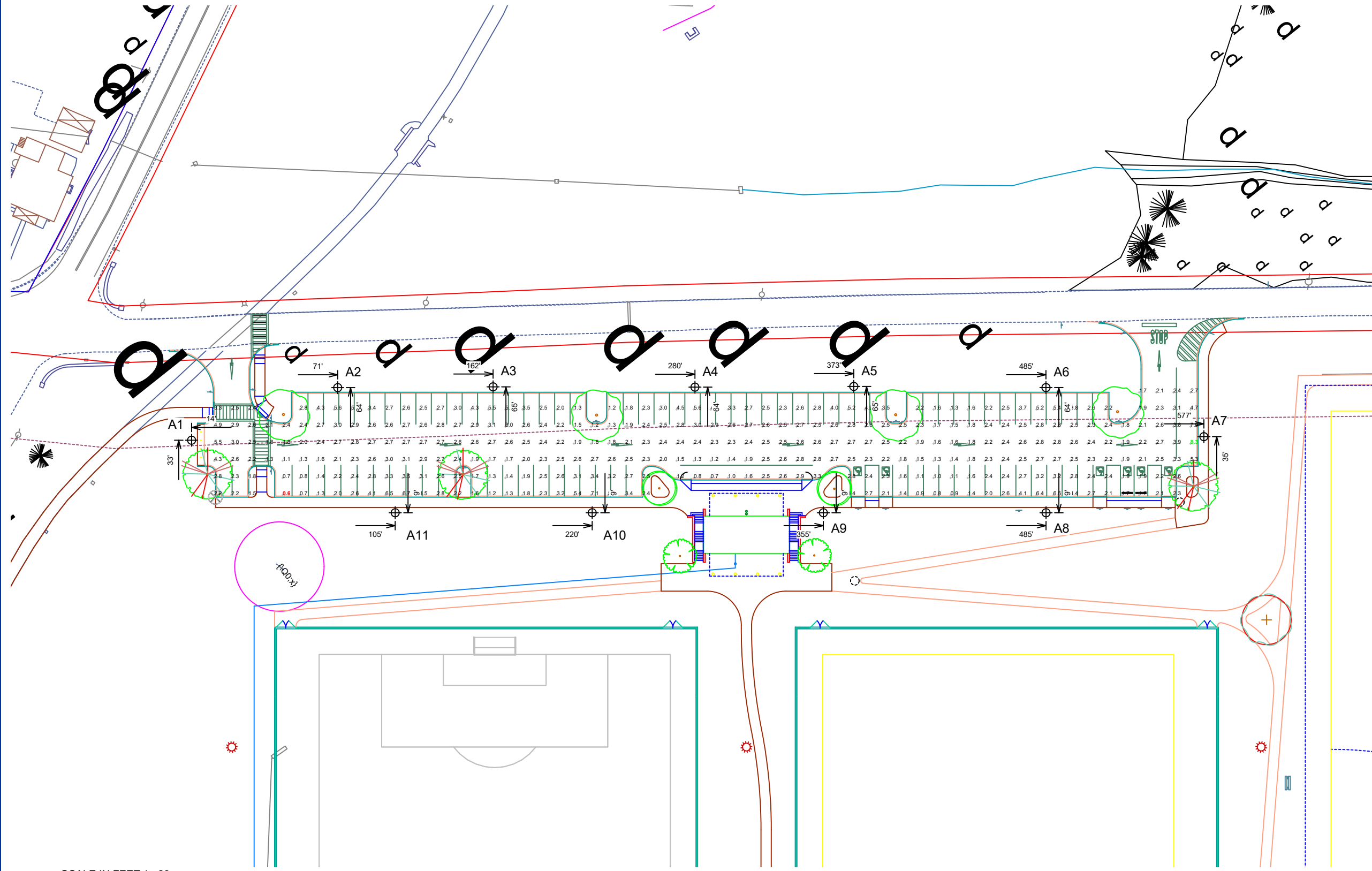
LUMINAIRE INFORMATION	
Applied Circuits:	D
No. of Luminaires:	11
Total Load:	1.14 kW

Guaranteed Performance: The ILLUMINATION described above is guaranteed per your Musco Warranty document and includes a 0.95 dirt depreciation factor.

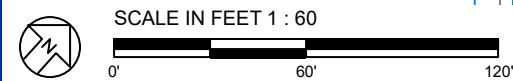
Field Measurements: Individual field measurements may vary from computer-calculated predictions and should be taken in accordance with IESNA RP-6-15.

Electrical System Requirements: Refer to Amperage Draw Chart and/or the "Musco Control System Summary" for electrical sizing.

Installation Requirements: Results assume ± 3% nominal voltage at line side of the driver and structures located within 3 feet (1m) of design locations.



Pole location(s) ⊕ dimensions are relative to 0,0 reference point(s) ⊗



We Make It Happen.

EQUIPMENT LIST FOR AREAS SHOWN

QTY	Pole			Luminaires						
	LOCATION	SIZE	GRADE ELEVATION	MOUNTING HEIGHT	LUMINAIRE TYPE	QTY / POLE	THIS GRID	OTHER GRIDS		
11	A1-A11	20'	-14'	6'	CREE OSQ	1	1	0		
2	A12-A13	20'	-	20'	CREE OSQ	1	1	0		
2	S1-S2	70'	-	70'	TLC-LED-1500	9	9	0		
1	S3	70'	-	30'	CREE OSQ	1	1	0		
1	S4	70'	-	70'	TLC-LED-1500	8	8	0		
17	TOTALS							48	48	0

Westtown School Soccer

West Chester, PA

GRID SUMMARY

Name: Blanket Grid - Soccer / Parking / Sidewalk
 Spacing: 20.0' x 20.0'
 Height: 0.0' above grade

ILLUMINATION SUMMARY

MAINTAINED HORIZONTAL FOOTCANDLES

Entire Grid

Scan Average: 4.56

Maximum: 68

Minimum: 0

Avg / Min: -

Max / Min: -

UG (adjacent pts): 10.91

CU: 0.99

No. of Points: 3068

LUMINAIRE INFORMATION

Applied Circuits: A, C, D

No. of Luminaires: 48

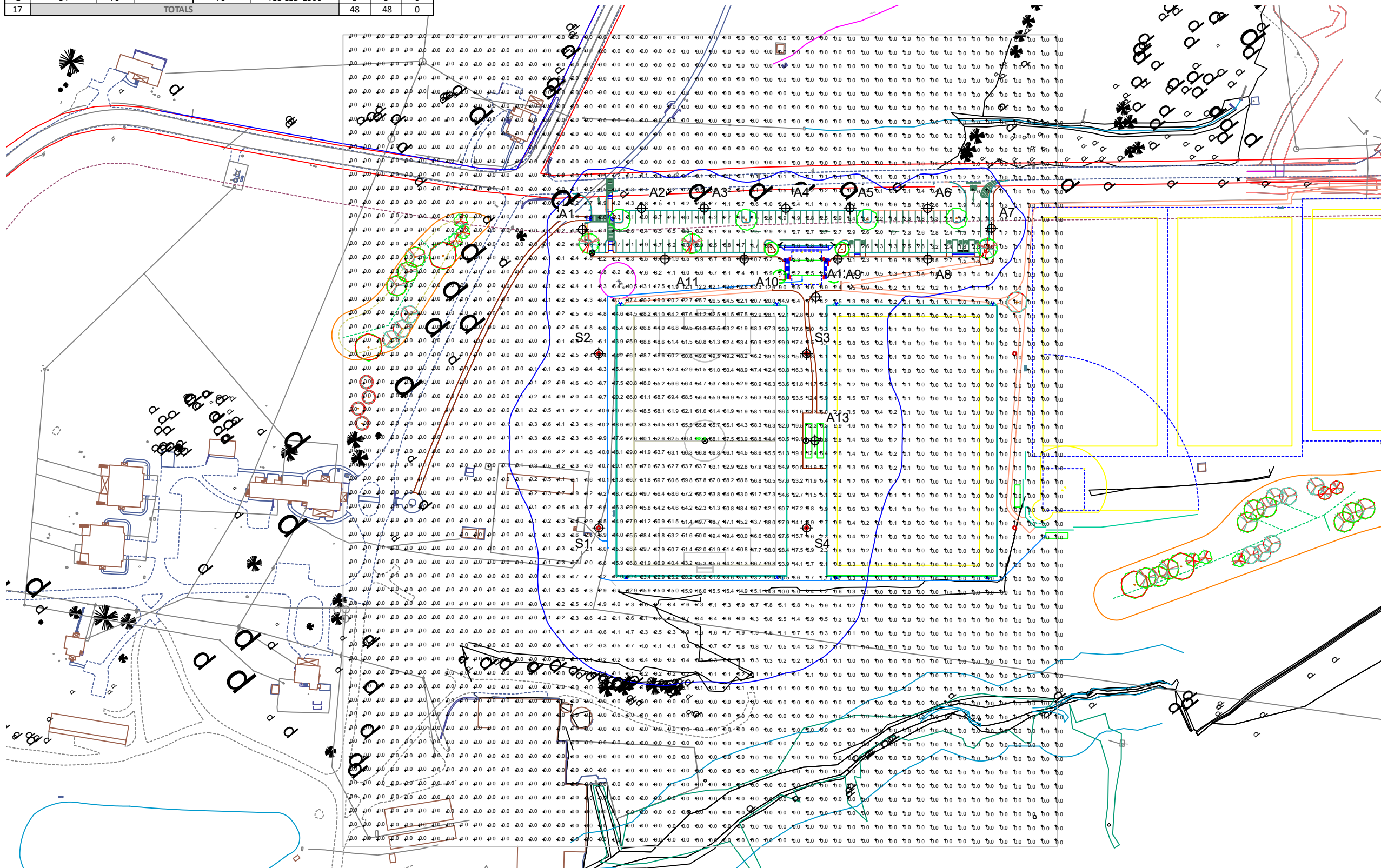
Total Load: 50.08 kW

Guaranteed Performance: The ILLUMINATION described above is guaranteed per your Musco Warranty document and includes a 0.95 dirt depreciation factor.

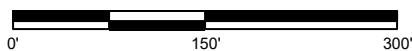
Field Measurements: Individual field measurements may vary from computer-calculated predictions and should be taken in accordance with IESNA RP-6-15.

Electrical System Requirements: Refer to Amperage Draw Chart and/or the "Musco Control System Summary" for electrical sizing.

Installation Requirements: Results assume ± 3% nominal voltage at line side of the driver and structures located within 3 feet (1m) of design locations.



SCALE IN FEET 1 : 150



Pole location(s) ⊕ dimensions are relative to 0,0 reference point(s) ⊗



We Make It Happen.

Not to be reproduced in whole or part without the written consent of Musco Sports Lighting, LLC. ©1981, 2023 Musco Sports Lighting, LLC.

ILLUMINATION SUMMARY

EQUIPMENT LIST FOR AREAS SHOWN

Pole		Luminaires							
QTY	LOCATION	SIZE	GRADE ELEVATION	MOUNTING HEIGHT	LUMINAIRE TYPE	QTY / POLE	THIS GRID	OTHER GRIDS	
2	S1-S2	70'	-	70'	TLC-LED-1500	9	9	0	
1	S3	70'	-	30'	CREE OSQ	1	0	1	
1				70'	TLC-LED-1500	8	8	0	
1	S4	70'	-	70'	TLC-LED-1500	8	8	0	
4	TOTALS						35	34	1

Westtown School Soccer
West Chester, PA

GRID SUMMARY

Name: 150' Spill - HZ
Spacing: 30.0'
Height: 0.0' above grade

ILLUMINATION SUMMARY

HORIZONTAL FOOTCANDLES

Entire Grid
Scan Average: 0.0476
Maximum: 0.25
Minimum: 0.00
No. of Points: 69

LUMINAIRE INFORMATION

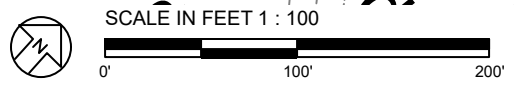
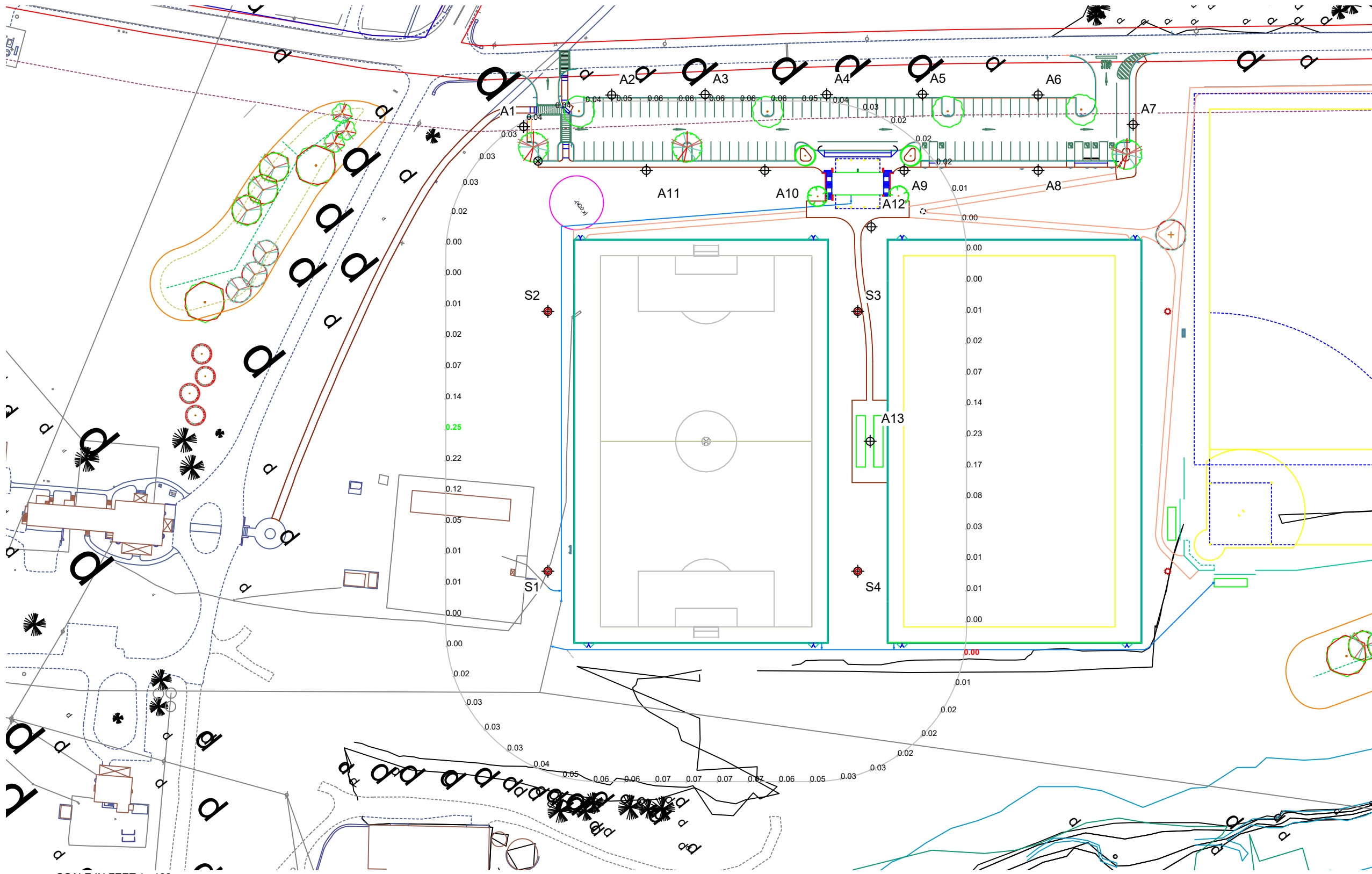
Applied Circuits: A
No. of Luminaires: 34
Total Load: 48.62 kW

Guaranteed Performance: The ILLUMINATION described above is guaranteed per your Musco Warranty document.

Field Measurements: Individual field measurements may vary from computer-calculated predictions and should be taken in accordance with IESNA RP-6-15.

Electrical System Requirements: Refer to Amperage Draw Chart and/or the "Musco Control System Summary" for electrical sizing.

Installation Requirements: Results assume ± 3% nominal voltage at line side of the driver and structures located within 3 feet (1m) of design locations.



Pole location(s) ⊕ dimensions are relative to 0,0 reference point(s) ⊗



We Make It Happen.

Not to be reproduced in whole or part without the written consent of Musco Sports Lighting, LLC. ©1981, 2023 Musco Sports Lighting, LLC.

EQUIPMENT LIST FOR AREAS SHOWN

Pole		Luminaires							
QTY	LOCATION	SIZE	GRADE ELEVATION	MOUNTING HEIGHT	LUMINAIRE TYPE	QTY / POLE	THIS GRID	OTHER GRIDS	
2	S1-S2	70'	-	70'	TLC-LED-1500	9	9	0	
1	S3	70'	-	30'	CREE OSQ	1	0	1	
				70'	TLC-LED-1500	8	8	0	
1	S4	70'	-	70'	TLC-LED-1500	8	8	0	
4	TOTALS						35	34	1

Westtown School Soccer
West Chester, PA

GRID SUMMARY	
Name:	150' Spill - VT
Spacing:	30.0'
Height:	5.0' above grade

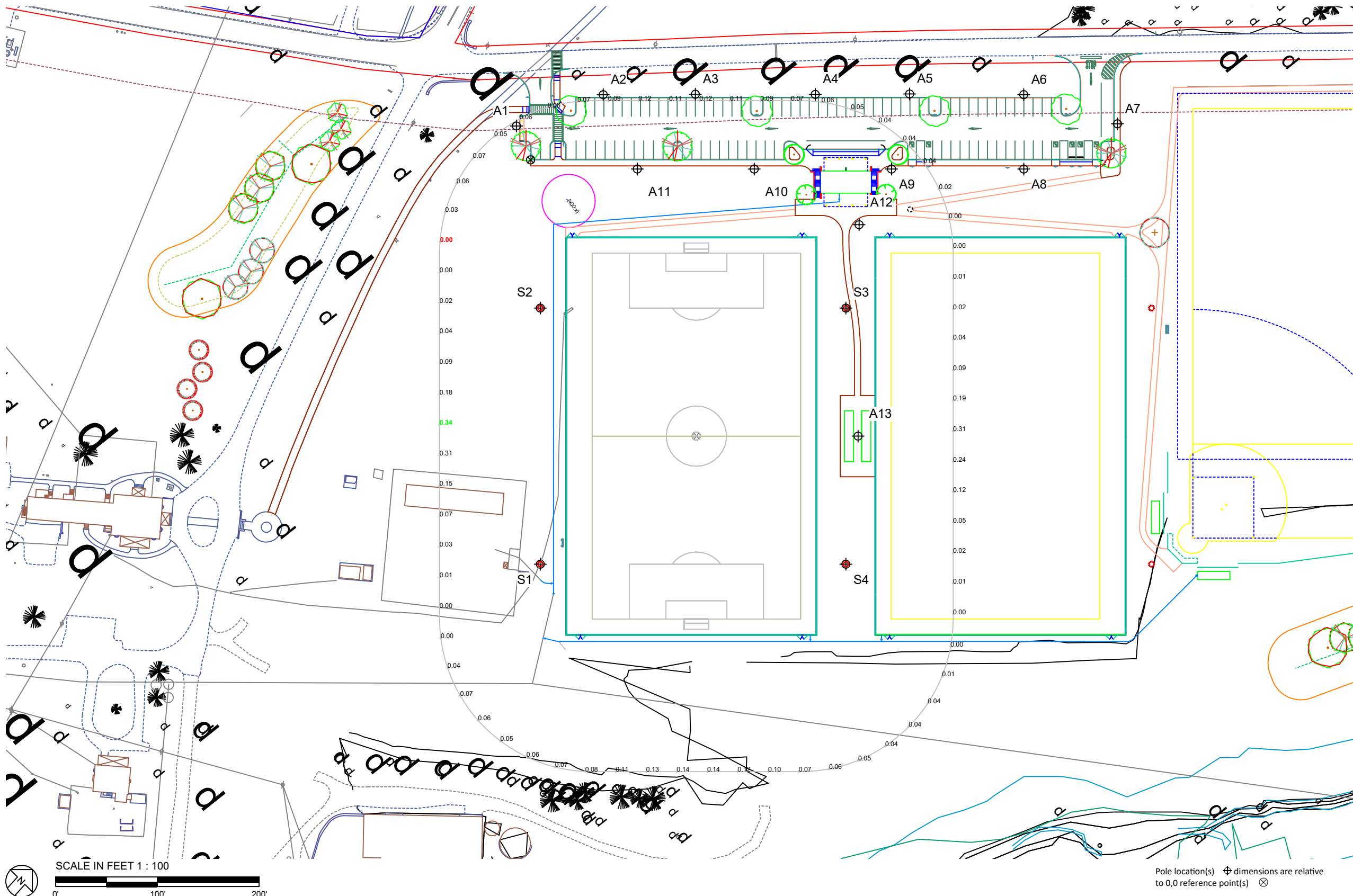
ILLUMINATION SUMMARY	
MAX VERTICAL FOOTCANDLES	
Scan Average:	Entire Grid 0.0757
Maximum:	0.34
Minimum:	0.00
No. of Points:	69
LUMINAIRE INFORMATION	
Applied Circuits:	A
No. of Luminaires:	34
Total Load:	48.62 kW

Guaranteed Performance: The ILLUMINATION described above is guaranteed per your Musco Warranty document.

Field Measurements: Individual field measurements may vary from computer-calculated predictions and should be taken in accordance with IESNA RP-6-15.

Electrical System Requirements: Refer to Amperage Draw Chart and/or the "Musco Control System Summary" for electrical sizing.

Installation Requirements: Results assume ± 3% nominal voltage at line side of the driver and structures located within 3 feet (1m) of design locations.



Pole location(s) ⊕ dimensions are relative to 0,0 reference point(s) ⊗



We Make It Happen.

Not to be reproduced in whole or part without the written consent of Musco Sports Lighting, LLC. ©1981, 2023 Musco Sports Lighting, LLC.

EQUIPMENT LIST FOR AREAS SHOWN

Pole		Luminaires						
QTY	LOCATION	SIZE	GRADE ELEVATION	MOUNTING HEIGHT	LUMINAIRE TYPE	QTY / POLE	THIS GRID	OTHER GRIDS
2	S1-S2	70'	-	70'	TLC-LED-1500	9	9	0
1	S3	70'	-	30'	CREE OSQ	1	0	1
1				70'	TLC-LED-1500	8	8	0
1	S4	70'	-	70'	TLC-LED-1500	8	8	0
4	TOTALS					35	34	1

Westtown School Soccer
West Chester, PA

GRID SUMMARY

Name: 150' Glare
Spacing: 30.0'
Height: 5.0' above grade

ILLUMINATION SUMMARY

CANDELA (PER FIXTURE)

Entire Grid
Scan Average: 1887.7133
Maximum: 7612.62
Minimum: 90.99
No. of Points: 69

LUMINAIRE INFORMATION

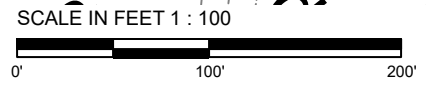
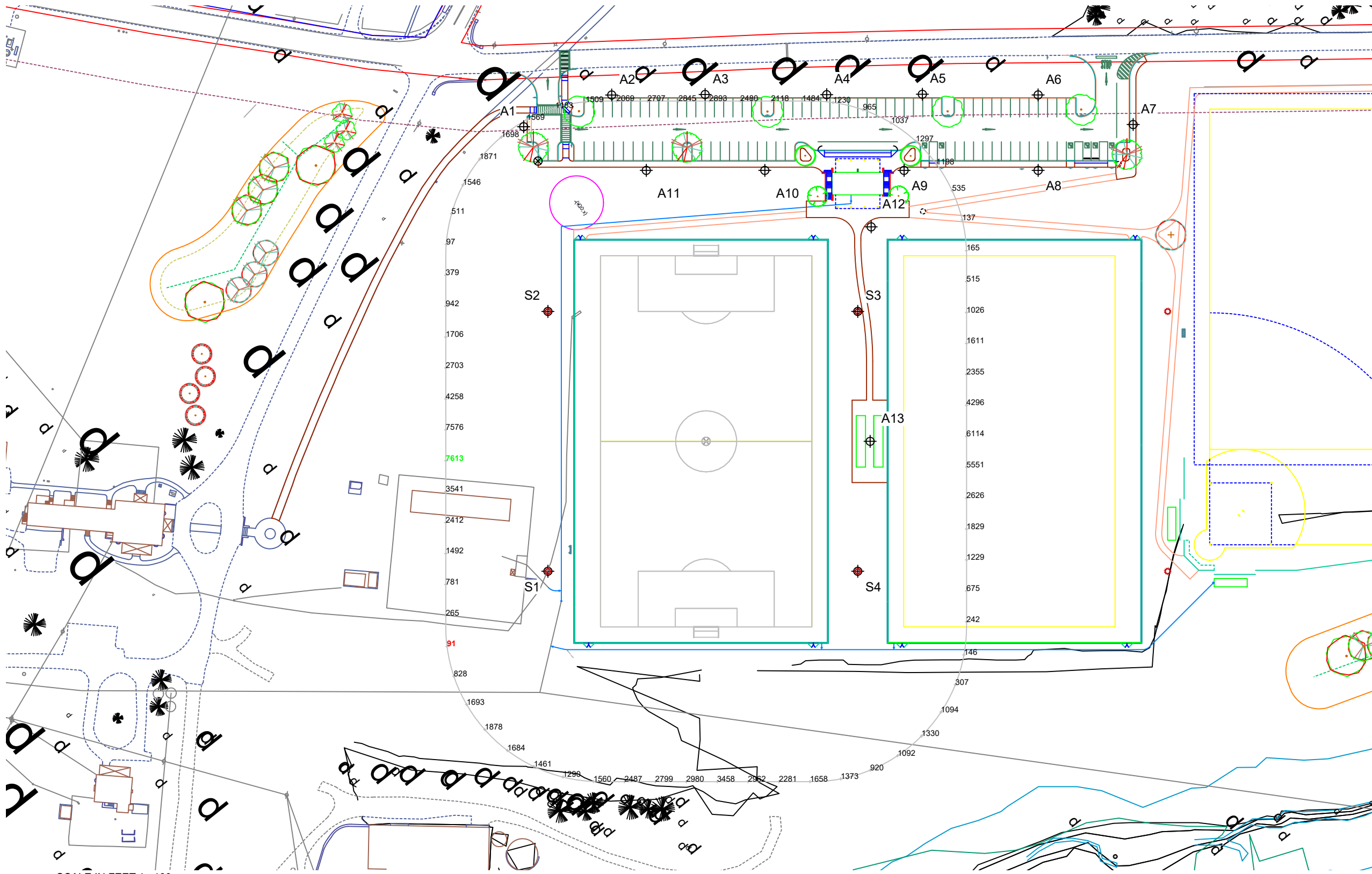
Applied Circuits: A
No. of Luminaires: 34
Total Load: 48.62 kW

Guaranteed Performance: The ILLUMINATION described above is guaranteed per your Musco Warranty document.

Field Measurements: Individual field measurements may vary from computer-calculated predictions and should be taken in accordance with IESNA RP-6-15.

Electrical System Requirements: Refer to Amperage Draw Chart and/or the "Musco Control System Summary" for electrical sizing.

Installation Requirements: Results assume ± 3% nominal voltage at line side of the driver and structures located within 3 feet (1m) of design locations.



Pole location(s) ⊕ dimensions are relative to 0,0 reference point(s) ⊗



We Make It Happen.

Not to be reproduced in whole or part without the written consent of Musco Sports Lighting, LLC. ©1981, 2023 Musco Sports Lighting, LLC.

ILLUMINATION SUMMARY

EQUIPMENT LIST FOR AREAS SHOWN

Pole		Luminaires							
QTY	LOCATION	SIZE	GRADE ELEVATION	MOUNTING HEIGHT	LUMINAIRE TYPE	QTY / POLE	THIS GRID	OTHER GRIDS	
2	S1-S2	70'	-	70'	TLC-LED-1500	9	9	0	
1	S3	70'	-	30'	CREE OSQ	1	0	1	
1				70'	TLC-LED-1500	8	8	0	
1	S4	70'	-	70'	TLC-LED-1500	8	8	0	
4	TOTALS						35	34	1

Westtown School Soccer

West Chester, PA

GRID SUMMARY

Name: 400' Spill - HZ
 Spacing: 30.0'
 Height: 0.0' above grade

ILLUMINATION SUMMARY

HORIZONTAL FOOTCANDLES	
Scan Average:	Entire Grid 0.0000
Maximum:	0.00
Minimum:	0.00
No. of Points:	122

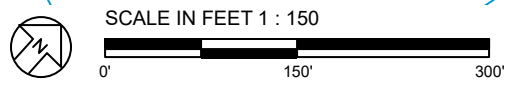
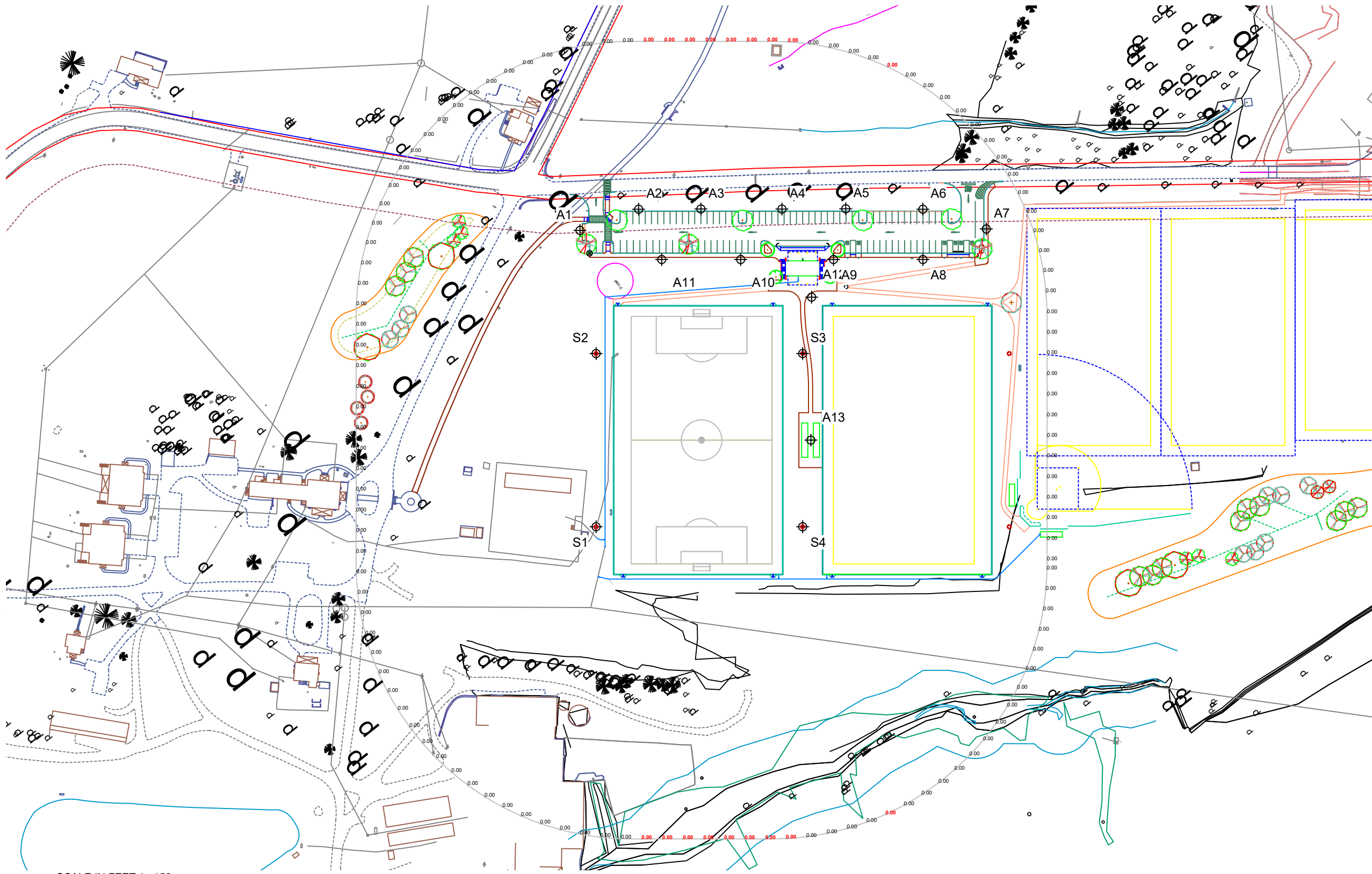
LUMINAIRE INFORMATION	
Applied Circuits:	A
No. of Luminaires:	34
Total Load:	48.62 kW

Guaranteed Performance: The ILLUMINATION described above is guaranteed per your Musco Warranty document.

Field Measurements: Individual field measurements may vary from computer-calculated predictions and should be taken in accordance with IESNA RP-6-15.

Electrical System Requirements: Refer to Amperage Draw Chart and/or the "Musco Control System Summary" for electrical sizing.

Installation Requirements: Results assume ± 3% nominal voltage at line side of the driver and structures located within 3 feet (1m) of design locations.



Pole location(s) ⊕ dimensions are relative to 0,0 reference point(s) ⊗



We Make It Happen.

Not to be reproduced in whole or part without the written consent of Musco Sports Lighting, LLC. ©1981, 2023 Musco Sports Lighting, LLC.

EQUIPMENT LIST FOR AREAS SHOWN

Pole		Luminaires							
QTY	LOCATION	SIZE	GRADE ELEVATION	MOUNTING HEIGHT	LUMINAIRE TYPE	QTY / POLE	THIS GRID	OTHER GRIDS	
2	S1-S2	70'	-	70'	TLC-LED-1500	9	9	0	
1	S3	70'	-	30'	CREE OSQ	1	0	1	
1				70'	TLC-LED-1500	8	8	0	
1	S4	70'	-	70'	TLC-LED-1500	8	8	0	
4	TOTALS						35	34	1

Westtown School Soccer

West Chester, PA

GRID SUMMARY

Name: 400' Spill - VT
 Spacing: 30.0'
 Height: 5.0' above grade

ILLUMINATION SUMMARY

MAX VERTICAL FOOTCANDLES	
Scan Average:	Entire Grid 0.0000
Maximum:	0.00
Minimum:	0.00
No. of Points:	122

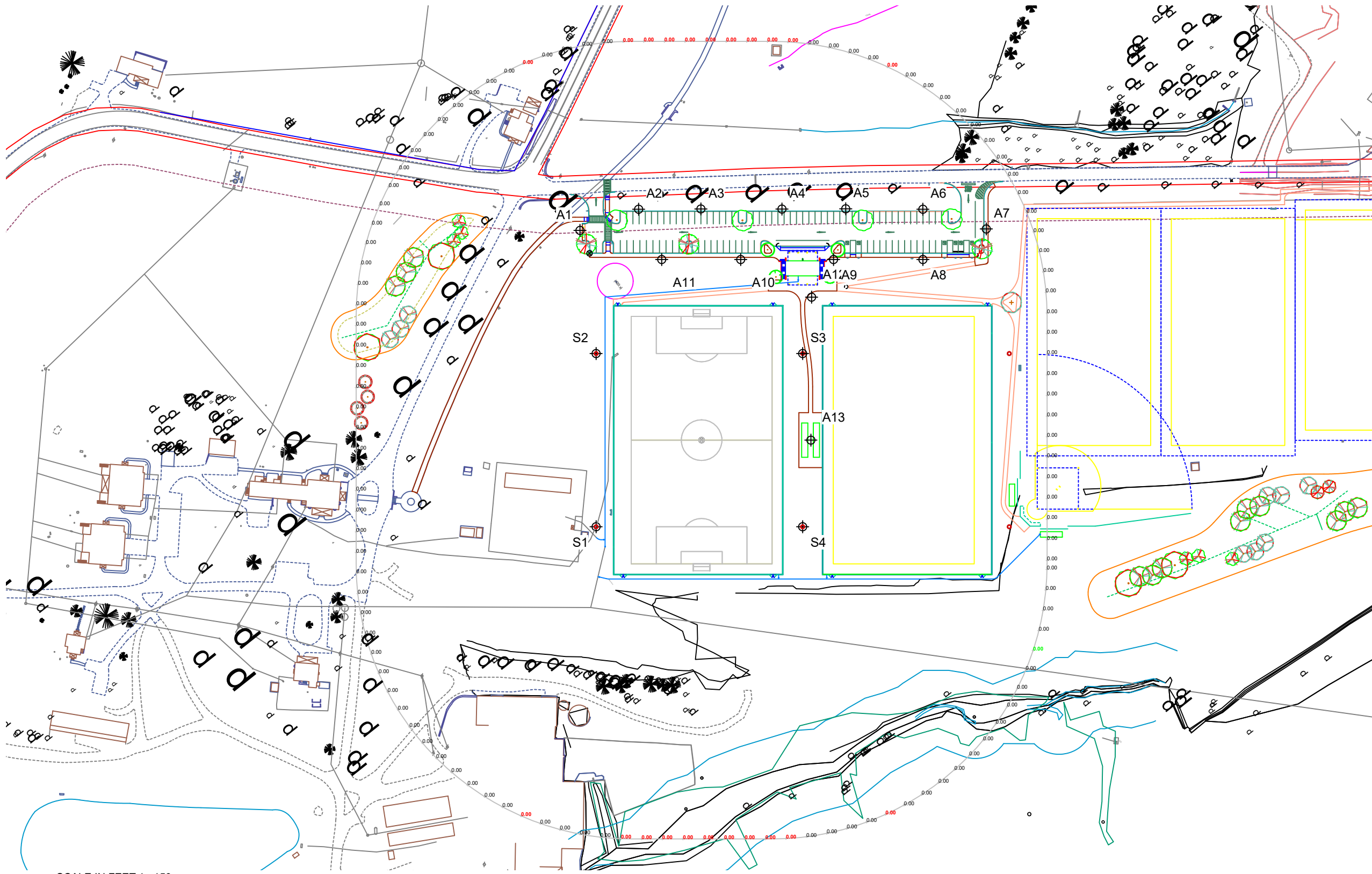
LUMINAIRE INFORMATION	
Applied Circuits:	A
No. of Luminaires:	34
Total Load:	48.62 kW

Guaranteed Performance: The ILLUMINATION described above is guaranteed per your Musco Warranty document.

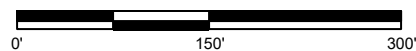
Field Measurements: Individual field measurements may vary from computer-calculated predictions and should be taken in accordance with IESNA RP-6-15.

Electrical System Requirements: Refer to Amperage Draw Chart and/or the "Musco Control System Summary" for electrical sizing.

Installation Requirements: Results assume ± 3% nominal voltage at line side of the driver and structures located within 3 feet (1m) of design locations.



SCALE IN FEET 1 : 150



Pole location(s) ⊕ dimensions are relative to 0,0 reference point(s) ⊗



We Make It Happen.

Not to be reproduced in whole or part without the written consent of Musco Sports Lighting, LLC. ©1981, 2023 Musco Sports Lighting, LLC.

EQUIPMENT LIST FOR AREAS SHOWN

Pole		Luminaires						
QTY	LOCATION	SIZE	GRADE ELEVATION	MOUNTING HEIGHT	LUMINAIRE TYPE	QTY / POLE	THIS GRID	OTHER GRIDS
2	S1-S2	70'	-	70'	TLC-LED-1500	9	9	0
1	S3	70'	-	30'	CREE OSQ	1	0	1
1				70'	TLC-LED-1500	8	8	0
1	S4	70'	-	70'	TLC-LED-1500	8	8	0
4	TOTALS					35	34	1

Westtown School Soccer

West Chester, PA

GRID SUMMARY

Name: 400' Glare
 Spacing: 30.0'
 Height: 5.0' above grade

ILLUMINATION SUMMARY

CANDELA (PER FIXTURE)	
Entire Grid	14.6268
Scan Average:	71.38
Maximum:	0.00
Minimum:	122
No. of Points:	

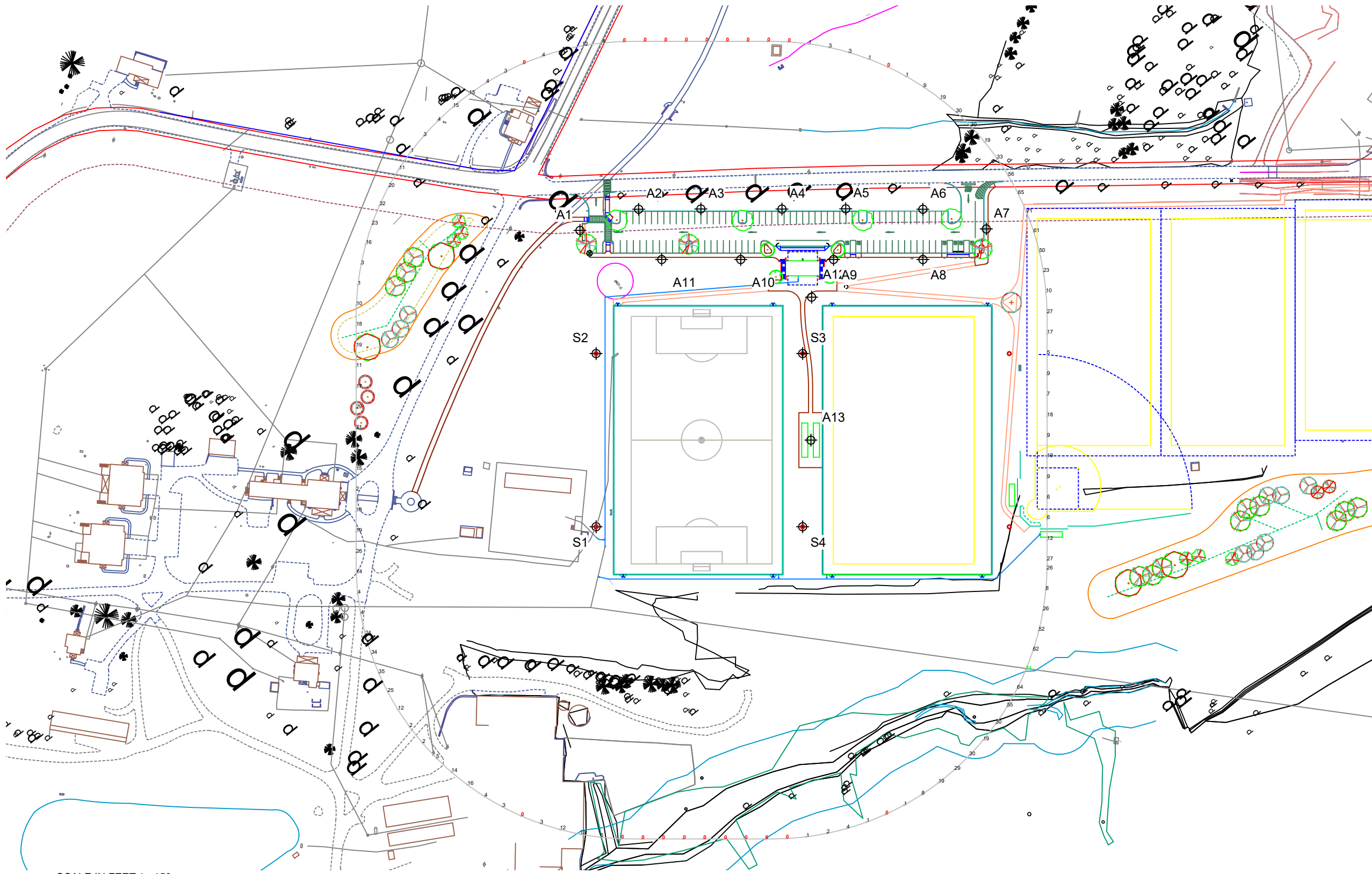
LUMINAIRE INFORMATION	
Applied Circuits:	A
No. of Luminaires:	34
Total Load:	48.62 kW

Guaranteed Performance: The ILLUMINATION described above is guaranteed per your Musco Warranty document.

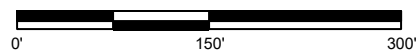
Field Measurements: Individual field measurements may vary from computer-calculated predictions and should be taken in accordance with IESNA RP-6-15.

Electrical System Requirements: Refer to Amperage Draw Chart and/or the "Musco Control System Summary" for electrical sizing.

Installation Requirements: Results assume ± 3% nominal voltage at line side of the driver and structures located within 3 feet (1m) of design locations.



SCALE IN FEET 1 : 150



Pole location(s) ⊕ dimensions are relative to 0,0 reference point(s) ⊗



We Make It Happen.

Not to be reproduced in whole or part without the written consent of Musco Sports Lighting, LLC. ©1981, 2023 Musco Sports Lighting, LLC.

GRID SUMMARY

Name:	Property Spill - Horizontal
Spacing:	30.0'
Height:	0.0' above grade

ILLUMINATION SUMMARY

Scale Average:	Entrance Grid	0.0000
Maximum:	0.00	
Minimum:	0.00	
No. of Points:	418	
Applied Circuits:	A, C, D	
No. of Luminaires:	48	
Total Load:	50.08 kW	

Guaranteed Performance: The ILLUMINATION described above is guaranteed per your Musco Warranty document.
Field Measurements: Individual field measurements may vary from computer calculated predictions and should be taken in accordance with IESNA RP-8-ES.
Electrical System Requirements: Refer to Ampereage Draw Chart and/or the "Musco Control System Summary" for electrical sizing.
Installation Requirements: Results assume ± 3% nominal voltage at the side of the driver and structures located within 3 feet (1m) of design locations.

EQUIPMENT LIST FOR AREAS SHOWN

NO.	SYMBOL	QTY	DESCRIPTION	UNIT	TIME	PRICE
1	A1-A11	30	CHIT 500	FT	1	2
2	A12-A13	30	CHIT 500	FT	1	2
3	S1-S2	30	THE LED 1000	FT	1	0
4	S3	30	CHIT 500	FT	1	2
5	S4	30	THE LED 1000	FT	1	0
6	S5	30	THE LED 1000	FT	1	0
7	S6	30	THE LED 1000	FT	1	0
8	S7	30	THE LED 1000	FT	1	0
9	S8	30	THE LED 1000	FT	1	0
10	S9	30	THE LED 1000	FT	1	0
11	S10	30	THE LED 1000	FT	1	0
12	S11	30	THE LED 1000	FT	1	0
13	S12	30	THE LED 1000	FT	1	0
14	S13	30	THE LED 1000	FT	1	0
15	S14	30	THE LED 1000	FT	1	0
16	S15	30	THE LED 1000	FT	1	0
17	S16	30	THE LED 1000	FT	1	0
18	S17	30	THE LED 1000	FT	1	0
19	S18	30	THE LED 1000	FT	1	0
20	S19	30	THE LED 1000	FT	1	0
21	S20	30	THE LED 1000	FT	1	0
22	S21	30	THE LED 1000	FT	1	0
23	S22	30	THE LED 1000	FT	1	0
24	S23	30	THE LED 1000	FT	1	0
25	S24	30	THE LED 1000	FT	1	0
26	S25	30	THE LED 1000	FT	1	0
27	S26	30	THE LED 1000	FT	1	0
28	S27	30	THE LED 1000	FT	1	0
29	S28	30	THE LED 1000	FT	1	0
30	S29	30	THE LED 1000	FT	1	0
31	S30	30	THE LED 1000	FT	1	0
32	S31	30	THE LED 1000	FT	1	0
33	S32	30	THE LED 1000	FT	1	0
34	S33	30	THE LED 1000	FT	1	0
35	S34	30	THE LED 1000	FT	1	0
36	S35	30	THE LED 1000	FT	1	0
37	S36	30	THE LED 1000	FT	1	0
38	S37	30	THE LED 1000	FT	1	0
39	S38	30	THE LED 1000	FT	1	0
40	S39	30	THE LED 1000	FT	1	0
41	S40	30	THE LED 1000	FT	1	0
42	S41	30	THE LED 1000	FT	1	0
43	S42	30	THE LED 1000	FT	1	0
44	S43	30	THE LED 1000	FT	1	0
45	S44	30	THE LED 1000	FT	1	0
46	S45	30	THE LED 1000	FT	1	0
47	S46	30	THE LED 1000	FT	1	0
48	S47	30	THE LED 1000	FT	1	0
49	S48	30	THE LED 1000	FT	1	0
50	S49	30	THE LED 1000	FT	1	0
51	S50	30	THE LED 1000	FT	1	0
52	S51	30	THE LED 1000	FT	1	0
53	S52	30	THE LED 1000	FT	1	0
54	S53	30	THE LED 1000	FT	1	0
55	S54	30	THE LED 1000	FT	1	0
56	S55	30	THE LED 1000	FT	1	0
57	S56	30	THE LED 1000	FT	1	0
58	S57	30	THE LED 1000	FT	1	0
59	S58	30	THE LED 1000	FT	1	0
60	S59	30	THE LED 1000	FT	1	0
61	S60	30	THE LED 1000	FT	1	0
62	S61	30	THE LED 1000	FT	1	0
63	S62	30	THE LED 1000	FT	1	0
64	S63	30	THE LED 1000	FT	1	0
65	S64	30	THE LED 1000	FT	1	0
66	S65	30	THE LED 1000	FT	1	0
67	S66	30	THE LED 1000	FT	1	0
68	S67	30	THE LED 1000	FT	1	0
69	S68	30	THE LED 1000	FT	1	0
70	S69	30	THE LED 1000	FT	1	0
71	S70	30	THE LED 1000	FT	1	0
72	S71	30	THE LED 1000	FT	1	0
73	S72	30	THE LED 1000	FT	1	0
74	S73	30	THE LED 1000	FT	1	0
75	S74	30	THE LED 1000	FT	1	0
76	S75	30	THE LED 1000	FT	1	0
77	S76	30	THE LED 1000	FT	1	0
78	S77	30	THE LED 1000	FT	1	0
79	S78	30	THE LED 1000	FT	1	0
80	S79	30	THE LED 1000	FT	1	0
81	S80	30	THE LED 1000	FT	1	0
82	S81	30	THE LED 1000	FT	1	0
83	S82	30	THE LED 1000	FT	1	0
84	S83	30	THE LED 1000	FT	1	0
85	S84	30	THE LED 1000	FT	1	0
86	S85	30	THE LED 1000	FT	1	0
87	S86	30	THE LED 1000	FT	1	0
88	S87	30	THE LED 1000	FT	1	0
89	S88	30	THE LED 1000	FT	1	0
90	S89	30	THE LED 1000	FT	1	0
91	S90	30	THE LED 1000	FT	1	0
92	S91	30	THE LED 1000	FT	1	0
93	S92	30	THE LED 1000	FT	1	0
94	S93	30	THE LED 1000	FT	1	0
95	S94	30	THE LED 1000	FT	1	0
96	S95	30	THE LED 1000	FT	1	0
97	S96	30	THE LED 1000	FT	1	0
98	S97	30	THE LED 1000	FT	1	0
99	S98	30	THE LED 1000	FT	1	0
100	S99	30	THE LED 1000	FT	1	0
101	S100	30	THE LED 1000	FT	1	0

GRID SUMMARY

Name:	Property Split - Vertical
Spacing:	30.0'
Height:	5.0' above grade

ILLUMINATION SUMMARY

Scale Average:	Entrance Grid	0.0000
Maximum:	0.00	
Minimum:	0.00	
No. of Points:	418	
Applied Circuits:	A, C, D	
No. of Luminaires:	48	
Total Load:	50.08 kW	

Guaranteed Performance: The ILLUMINATION described above is guaranteed per your Musco Warranty document.
Field Measurements: Individual field measurements may vary from computer calculated predictions and should be taken in accordance with IESNA RP-8-ES.
Electrical System Requirements: Refer to Ampereage Draw Chart and/or the "Musco Control System Summary" for electrical sizing.
Installation Requirements: Results assume ± 3% nominal voltage at the side of the driver and structures located within 3 feet (1m) of design locations.

EQUIPMENT LIST FOR AREAS SHOWN

NO.	SYMBOL	QTY	DESCRIPTION	WATTAGE	TYPE	HEIGHT
1	A1	1	LED 100W	100	1	10
2	A2	1	LED 100W	100	1	10
3	A3	1	LED 100W	100	1	10
4	A4	1	LED 100W	100	1	10
5	A5	1	LED 100W	100	1	10
6	A6	1	LED 100W	100	1	10
7	A7	1	LED 100W	100	1	10
8	A8	1	LED 100W	100	1	10
9	A9	1	LED 100W	100	1	10
10	A10	1	LED 100W	100	1	10
11	A11	1	LED 100W	100	1	10
12	A12	1	LED 100W	100	1	10
13	A13	1	LED 100W	100	1	10
14	A14	1	LED 100W	100	1	10
15	A15	1	LED 100W	100	1	10
16	A16	1	LED 100W	100	1	10
17	A17	1	LED 100W	100	1	10
18	A18	1	LED 100W	100	1	10
19	A19	1	LED 100W	100	1	10
20	A20	1	LED 100W	100	1	10
21	A21	1	LED 100W	100	1	10
22	A22	1	LED 100W	100	1	10
23	A23	1	LED 100W	100	1	10
24	A24	1	LED 100W	100	1	10
25	A25	1	LED 100W	100	1	10
26	A26	1	LED 100W	100	1	10
27	A27	1	LED 100W	100	1	10
28	A28	1	LED 100W	100	1	10
29	A29	1	LED 100W	100	1	10
30	A30	1	LED 100W	100	1	10
31	A31	1	LED 100W	100	1	10
32	A32	1	LED 100W	100	1	10
33	A33	1	LED 100W	100	1	10
34	A34	1	LED 100W	100	1	10
35	A35	1	LED 100W	100	1	10
36	A36	1	LED 100W	100	1	10
37	A37	1	LED 100W	100	1	10
38	A38	1	LED 100W	100	1	10
39	A39	1	LED 100W	100	1	10
40	A40	1	LED 100W	100	1	10
41	A41	1	LED 100W	100	1	10
42	A42	1	LED 100W	100	1	10
43	A43	1	LED 100W	100	1	10
44	A44	1	LED 100W	100	1	10
45	A45	1	LED 100W	100	1	10
46	A46	1	LED 100W	100	1	10
47	A47	1	LED 100W	100	1	10
48	A48	1	LED 100W	100	1	10



EQUIPMENT LIST FOR AREAS SHOWN

Pole			Luminaires						
QTY	LOCATION	SIZE	GRADE ELEVATION	MOUNTING HEIGHT	LUMINAIRE TYPE	QTY / POLE	THIS GRID	OTHER GRIDS	
11	A1-A11	20'	-14'	6'	CREE OSQ	1	1	0	
2	A12-A13	20'	-	20'	CREE OSQ	1	1	0	
2	S1-S2	70'	-	70'	TLC-LED-1500	9	9	0	
1	S3	70'	-	30'	CREE OSQ	1	1	0	
				70'	TLC-LED-1500	8	8	0	
1	S4	70'	-	70'	TLC-LED-1500	8	8	0	
17	TOTALS						48	48	0

Westtown School Soccer

West Chester, PA

GRID SUMMARY	
Name:	Westtown Road Spill - Horizontal
Spacing:	30.0'
Height:	0.0' above grade

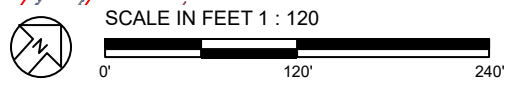
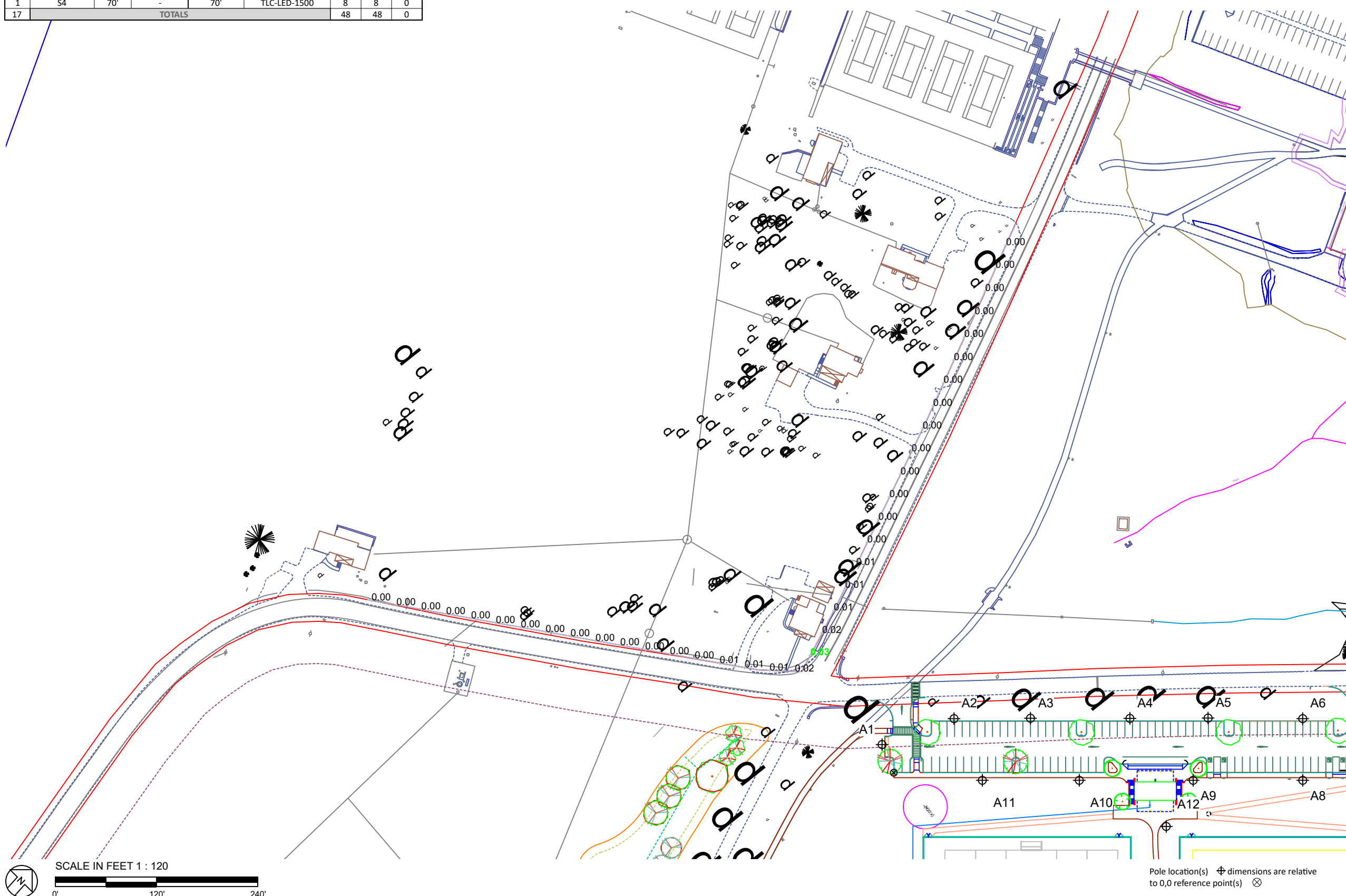
ILLUMINATION SUMMARY	
HORIZONTAL FOOTCANDLES	
Scan Average:	Entire Grid 0.0040
Maximum:	0.03
Minimum:	0.00
No. of Points:	37
LUMINAIRE INFORMATION	
Applied Circuits:	A, C, D
No. of Luminaires:	48
Total Load:	50.08 kW

Guaranteed Performance: The ILLUMINATION described above is guaranteed per your Musco Warranty document.

Field Measurements: Individual field measurements may vary from computer-calculated predictions and should be taken in accordance with IESNA RP-6-15.

Electrical System Requirements: Refer to Amperage Draw Chart and/or the "Musco Control System Summary" for electrical sizing.

Installation Requirements: Results assume ± 3% nominal voltage at line side of the driver and structures located within 3 feet (1m) of design locations.



Pole location(s) ⊕ dimensions are relative to 0,0 reference point(s) ⊗



EQUIPMENT LIST FOR AREAS SHOWN

Pole			Luminaires						
QTY	LOCATION	SIZE	GRADE ELEVATION	MOUNTING HEIGHT	LUMINAIRE TYPE	QTY / POLE	THIS GRID	OTHER GRIDS	
11	A1-A11	20'	-14'	6'	CREE OSQ	1	1	0	
2	A12-A13	20'	-	20'	CREE OSQ	1	1	0	
2	S1-S2	70'	-	70'	TLC-LED-1500	9	9	0	
1	S3	70'	-	30'	CREE OSQ	1	1	0	
				70'	TLC-LED-1500	8	8	0	
1	S4	70'	-	70'	TLC-LED-1500	8	8	0	
17	TOTALS						48	48	0

Westtown School Soccer

West Chester, PA

GRID SUMMARY

Name: Westtown Road Spill - Vertical
 Spacing: 30.0'
 Height: 5.0' above grade

ILLUMINATION SUMMARY

MAX VERTICAL FOOTCANDLES	
Entire Grid	0.0186
Scan Average:	0.09
Maximum:	0.00
Minimum:	0.00
No. of Points:	37

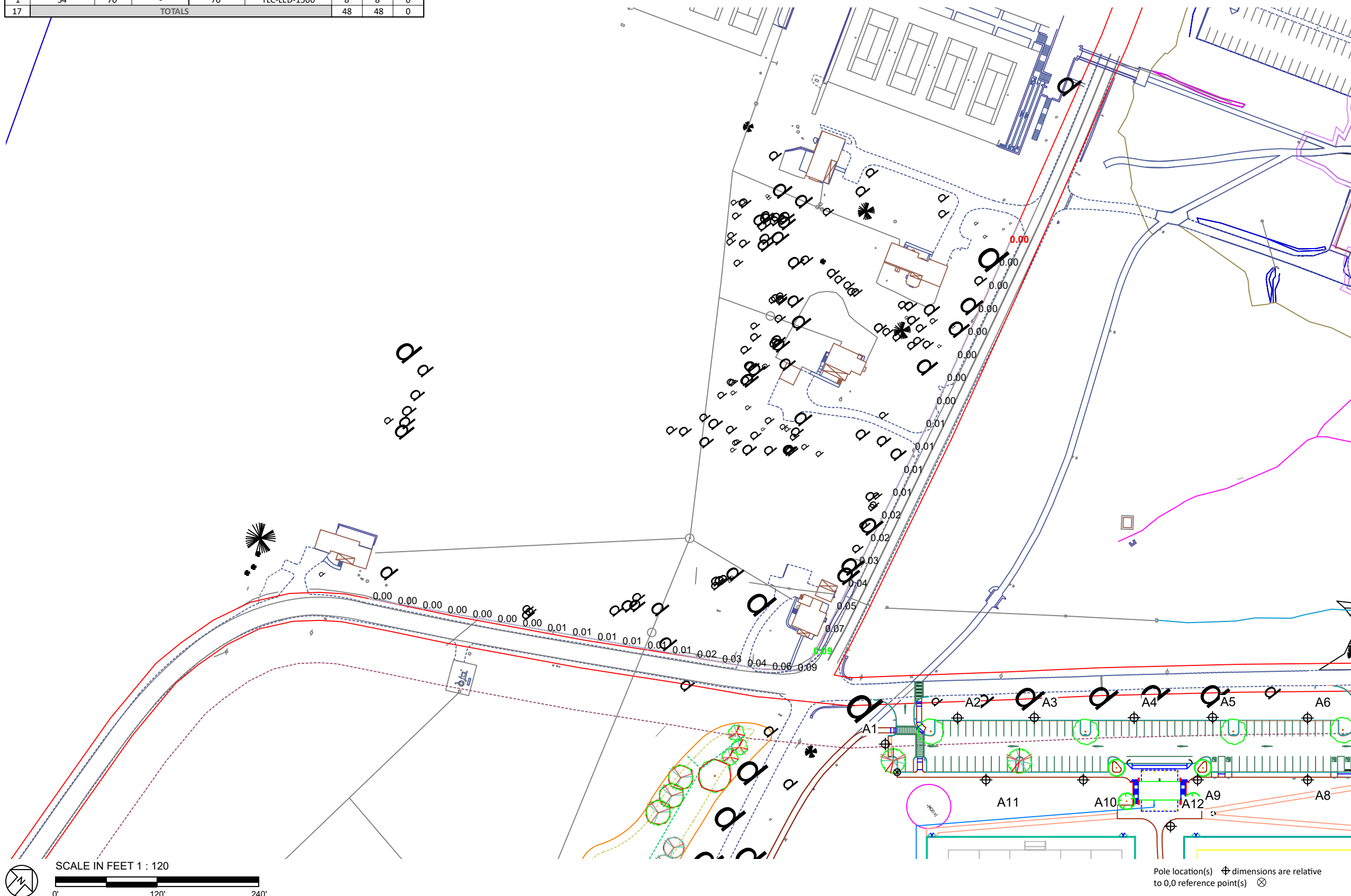
LUMINAIRE INFORMATION	
Applied Circuits:	A, C, D
No. of Luminaires:	48
Total Load:	50.08 kW

Guaranteed Performance: The ILLUMINATION described above is guaranteed per your Musco Warranty document.

Field Measurements: Individual field measurements may vary from computer-calculated predictions and should be taken in accordance with IESNA RP-6-15.

Electrical System Requirements: Refer to Amperage Draw Chart and/or the "Musco Control System Summary" for electrical sizing.

Installation Requirements: Results assume ± 3% nominal voltage at line side of the driver and structures located within 3 feet (1m) of design locations.



Pole location(s) ⊕ dimensions are relative to 0,0 reference point(s) ⊗



We Make It Happen.

Not to be reproduced in whole or part without the written consent of Musco Sports Lighting, LLC. ©1981, 2023 Musco Sports Lighting, LLC.

EQUIPMENT LIST FOR AREAS SHOWN

Pole			Luminaires					
QTY	LOCATION	SIZE	GRADE ELEVATION	MOUNTING HEIGHT	LUMINAIRE TYPE	QTY / POLE	THIS GRID	OTHER GRIDS
11	A1-A11	20'	-14'	6'	CREE OSQ	1	1	0
2	A12-A13	20'	-	20'	CREE OSQ	1	1	0
2	S1-S2	70'	-	70'	TLC-LED-1500	9	9	0
1	S3	70'	-	30'	CREE OSQ	1	1	0
				70'	TLC-LED-1500	8	8	0
1	S4	70'	-	70'	TLC-LED-1500	8	8	0
17	TOTALS					48	48	0

Westtown School Soccer
West Chester, PA

GRID SUMMARY	
Name:	Westtown Road Glare
Spacing:	30.0'
Height:	5.0' above grade

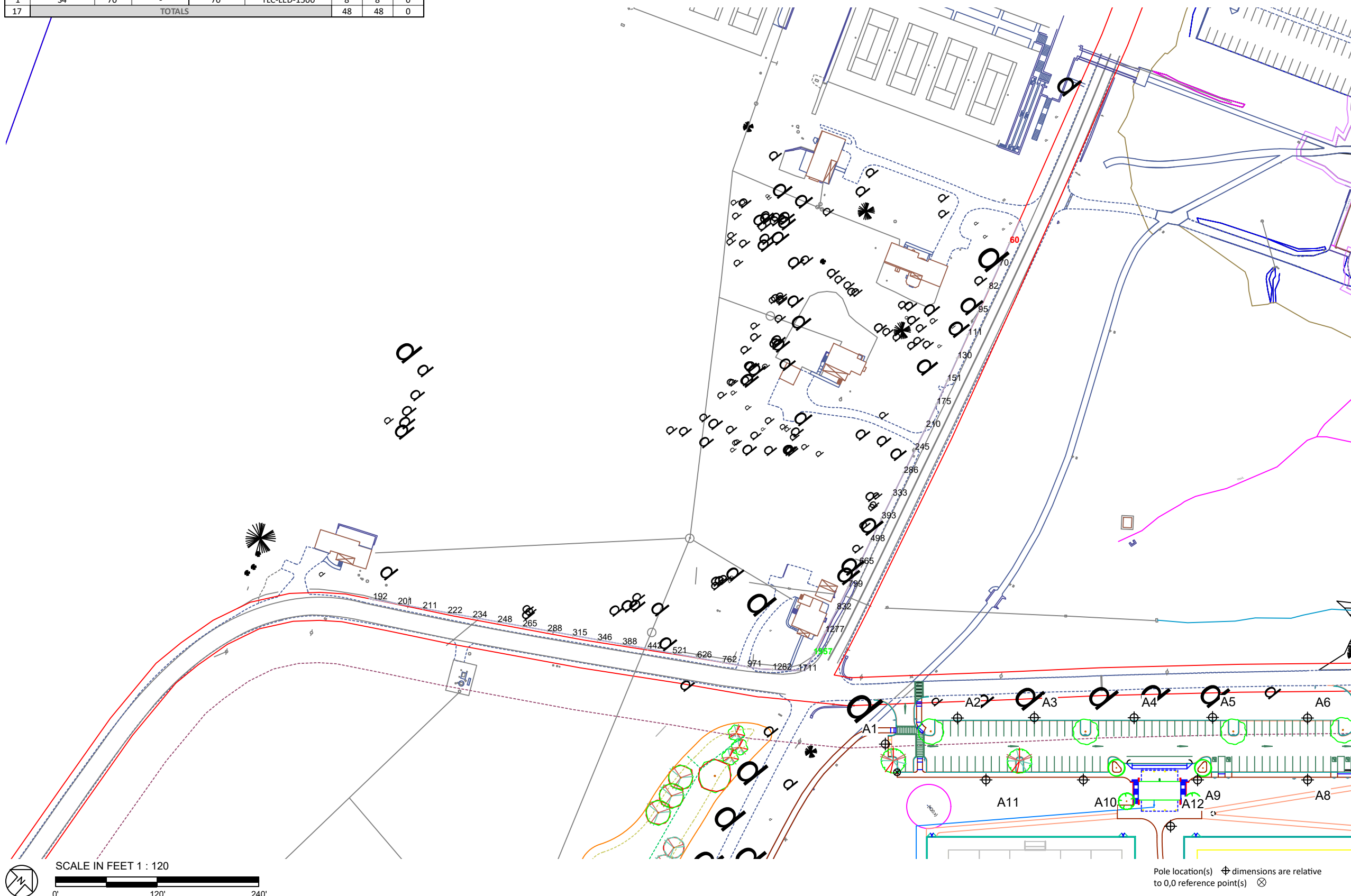
ILLUMINATION SUMMARY	
CANDELA (PER FIXTURE)	
Scan Average:	Entire Grid 475.3892
Maximum:	1956.85
Minimum:	60.33
No. of Points:	37
LUMINAIRE INFORMATION	
Applied Circuits:	A, C, D
No. of Luminaires:	48
Total Load:	50.08 kW

Guaranteed Performance: The ILLUMINATION described above is guaranteed per your Musco Warranty document.

Field Measurements: Individual field measurements may vary from computer-calculated predictions and should be taken in accordance with IESNA RP-6-15.

Electrical System Requirements: Refer to Amperage Draw Chart and/or the "Musco Control System Summary" for electrical sizing.

Installation Requirements: Results assume ± 3% nominal voltage at line side of the driver and structures located within 3 feet (1m) of design locations.



Pole location(s) ⊕ dimensions are relative to 0,0 reference point(s) ⊗



We Make It Happen.

Not to be reproduced in whole or part without the written consent of Musco Sports Lighting, LLC. ©1981, 2023 Musco Sports Lighting, LLC.

EQUIPMENT LAYOUT

INCLUDES:

- Parking
- Soccer 1

Electrical System Requirements: Refer to Amperage Draw Chart and/or the "Musco Control System Summary" for electrical sizing.

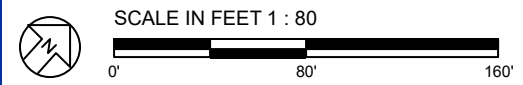
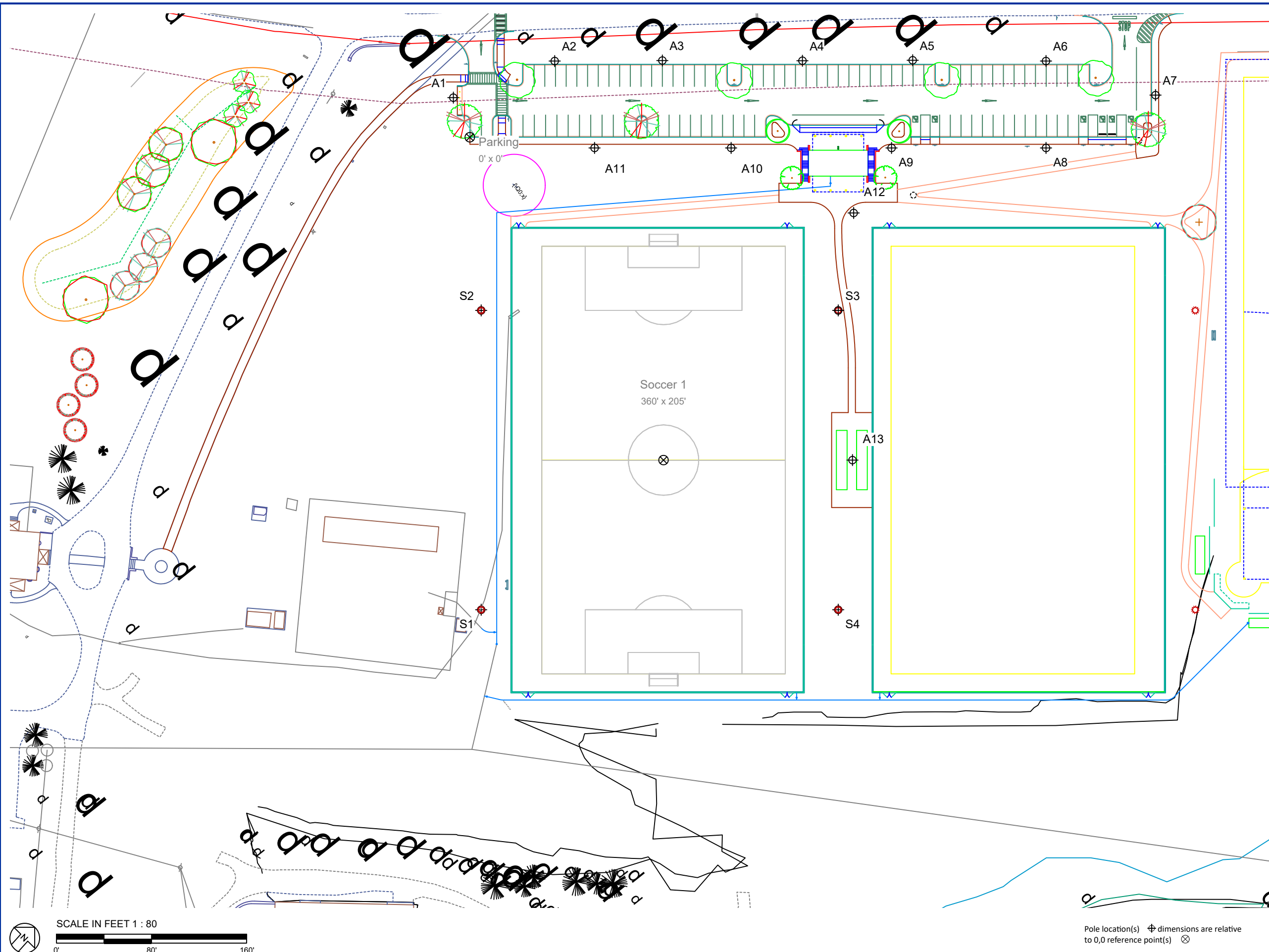
Installation Requirements: Results assume ± 3% nominal voltage at line side of the driver and structures located within 3 feet (1m) of design locations.

EQUIPMENT LIST FOR AREAS SHOWN

QTY	LOCATION	Pole		Luminaires		QTY / POLE
		SIZE	GRADE ELEVATION	MOUNTING HEIGHT	LUMINAIRE TYPE	
13	A1-A13	20'	-	20'	CREE OSQ	1
2	S1-S2	70'	-	70'	TLC-LED-1500	9
1	S3	70'	-	30'	CREE OSQ	1
1	S4	70'	-	70'	TLC-LED-1500	8
17	TOTALS					48

SINGLE LUMINAIRE AMPERAGE DRAW CHART

Driver (.90 min power factor)	Line Amperage Per Luminaire (max draw)					
	208 (60)	220 (60)	240 (60)	277 (60)	347 (60)	480 (60)
Single Phase Voltage	208 (60)	220 (60)	240 (60)	277 (60)	347 (60)	480 (60)
TLC-LED-1500	8.5	8.1	7.4	6.4	5.1	4.7
Cree OSQ	-	-	-	-	0.3	0.2



Pole location(s) Ⓢ dimensions are relative to 0,0 reference point(s) ⊗



Not to be reproduced in whole or part without the written consent of Musco Sports Lighting, LLC. ©1981, 2023 Musco Sports Lighting, LLC.